

# **ElectriFLEX MD™ (Medium-Duty)**

## **Commercial Electric Water Heater**

### Features

- **Vitraglas® Lining with Antimicrobial Technology**—An exclusively engineered enamel formula that provides superior tank protection from the highly corrosive effects of hot water. This formula (Vitraglas®) is fused to the steel surface by firing at a temperature of over 1600°F (871°C).
- **Hydrojet® Total Performance System**—Sediment reducing device that minimizes temperature build-up in tank.

### Additional Details

- **Fully Automatic Controls**—Designed to provide outlet water at a thermostatically controlled temperature greater than 180°F (82°C).
- **Direct Heat Transfer With Three Immersed INCOLOY® Elements**—Transfers heat directly and efficiently to the water. Screw-in style element.
- **Insulation System**—Non-CFC foam insulation cover the sides and top of the tank, reducing heat loss. This results in less energy consumption, improved efficiencies, and jacket rigidity.
- **Water Connections**—1¼" (32mm) NPT factory-installed true dielectric fittings extend water heater life and simplify water line connections.
- **UL Approved Field Conversion Kits**—Change kW and/or voltage in the field (see options on following page).
- **Protective Anode Rod**—Provides added protection against corrosion for long-term, trouble-free service.
- **Steel Tank**—Heavy gauge steel automatically formed, rolled and welded.
- **T&P Relief Valve**—Supplied.
- **Low Restrictive Brass Drain Valve**—Durable tamper proof design.



Photo is of E32-50S-3



**3 or 5-Year Limited Tank Warranties / 1-Year Limited Warranty on Component Parts.**

For more information on warranty, please visit [www.bradfordwhite.com](http://www.bradfordwhite.com).

INT450-0925

# ElectriFLEX MD™ (Medium-Duty) Commercial Electric Water Heater

## SPECIFICATIONS

These water heaters meet or exceed all or portions of (where applicable) the minimum efficiency requirements of ASHRAE Standard 90.1 (latest edition).

Model Number	Rated Nominal Capacity		Recovery at 100°F Rise*		A Floor to Heater Top	B Jacket Dia.	C Floor to Water Conn.	F Floor to T&P Conn.	G Floor to Top of Control Box	H Depth	C/L of Water Conn.	Water Conn. NPT	Approx. Shipping Weight
	U.S. Gal.	Imp. Gal.	U.S. GPH	Imp. GPH	in.	in.	in.	in.	in.	in.	in.	in.	lbs.
E32-50S-3	50	42	74	62	47 1/4	22	47 7/8	48 1/8	44 1/2	24 5/8	8	1 1/4	137
E32-80R-3	80	67	74	62	59 3/4	24	61	61 3/8	57	26 5/8	8	1 1/4	190
E32-120R-3	119	99	74	62	63	28 1/4	64 5/8	65	61 1/2	30 7/8	8	1 1/4	312
Model Number	Rated Nominal Capacity		Recovery at 56°C Rise*		A Floor to Heater Top	B Jacket Dia.	C Floor to Water Conn.	F Floor to T&P Conn.	G Floor to Top of Control Box	H Depth	C/L of Water Conn.	Water Conn. NPT	Approx. Shipping Weight
	Liters		Liters/ Hour		mm.	mm.	mm.	mm.	mm.	mm.	mm.	mm.	kg.
E32-50S-3	189		280		1200	559	1216	1222	1130	625	203	32	62
E32-80R-3	303		280		1518	610	1550	1559	1448	676	203	32	86
E32-120R-3	450		280		1600	730	1641	1651	1562	784	203	32	142

All models are wired 240V, 3-phase, 18kW.

Other voltages, wattages and kW are available and must be specified when ordering.

For 5 year models, change suffix "3" to "5".

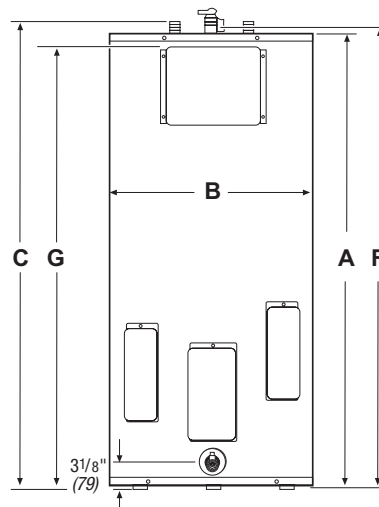
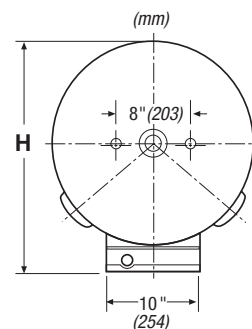
\* Based on 18kW operation. NSF Kits available.

## Conversion Kit Table

Required Total Heater kW	Each Element Wattage	Kit Part Numbers				
		208V	240V	380V	415V	480V
13.5	4500	415-43942-43	415-43942-10	415-43942-47	N/A	415-43942-37
15	5000	415-43942-44	415-43942-40	415-43942-48	N/A	415-43942-38
18	6000	415-43942-45*	415-43942-41	415-43942-49	N/A	415-43942-39

\* 415-43942-45 will require control box replacement (included in kit). Other wattages, wiring phase and kW are available and must be specified when ordering. 277 volt cannot be ordered as 3 phase operation.

Full Load Amperes - (Single Phase / Three Phase) and Recovery							GPH at °F Rise			LPH at °C Rise		
Input kW	208V	240V	277V	380V	415V	480V	40°F	100°F	140°F	23°C	56°C	78°C
13.5	64.9/37.5	56.3/32.5	48.7	20.5	18.8	28.1/16.2	139	56	40	526	212	151
15	72.1/41.6	62.5/36.1	54.2	22.8	20.9	31.3/18.0	155	62	44	587	235	167
18	86.5/50.0	75.0/43.3	65.0	27.3	25.0	37.5/21.7	186	74	53	704	280	201



## GENERAL:

All models UL® listed. All potable water connections are 1 1/4" NPT (32mm) on 8" (203mm) centers. All electrical connections are 3/4" (19mm) NPT. All models certified at 300 PSI test pressure (2068 kPa) and 150 PSI working pressure (1034 kPa).

## SAMPLE SPECIFICATION:

Water heater shall be a Bradford White model with a rated storage capacity of not less than \_\_\_\_\_ gallons/liters, a minimum kW input of \_\_\_\_\_, and a minimum recovery of \_\_\_\_\_ GPH/LPH at 100°F (56°C) temperature rise. It shall be designed certified either with or without a separate storage tank. The tank shall be lined with Vitraglas® vitreous enamel with antimicrobial technology. The tank should consist of three screw type elements with a combined maximum input of 18 kW. The tank shall have one anode rod. The units should be design certified by UL® for field conversions with specific kits available from the factory. The heater shall be insulated with not less than 2" (51mm) of Non-CFC foam. This water heater shall be equipped with an ASME rated T&P relief valve. The entire installation shall be made in compliance with state and local codes and ordinances.

*Dimensions and specifications subject to change without notice in accordance with our policy of continuous product improvement.*



Telephone: 800-523-2931 • Email: [international@bradfordwhite.com](mailto:international@bradfordwhite.com)  
Technical Support: 800-334-3393 • Email: [export.techsupport@bradfordwhite.com](mailto:export.techsupport@bradfordwhite.com)

©2025, Bradford White Corporation, USA. All rights reserved.

— BRADFORD WHITE IS —



INT450-0925