


Lowboy, Utility & Wall-Hung Residential Electric Water Heater

Features

 Bradford White is an ISO 9001-2015 registered manufacturing facility.

- **Certified to UL-174.**
- **Snap-Lock Lid and Base Pan**—Eliminates the need for screws, resulting in a clean appearance and smooth handling surface.
- **Glass Lined Steel Tank.**
- **25 mm (1") Non-CFC Foam Insulation**—Covers the sides and top of the tank, reducing the amount of heat loss. This results in less energy consumption, improved operation efficiencies, and jacket rigidity.
- **Incoloy Element**—Transfers heat directly and efficiently to the water. Screw-in style.
- **Fully Automatic Thermostat Controls**—Fast acting surface-mount thermostat with high limit energy cut-off (manual reset) for safety.
- **Pilot Light**—Indicates that the elements are actively heating the water.
- **Protective Anode Rod**—Provides added protection against corrosion for long-term, trouble-free service.
- **Water Connections**— $\frac{3}{4}$ " NPT. Color-coded for ease of installation.
- **Powder Coated External Jacket**—Combines attractive appearance with maximum protection.
- **Factory-Installed Heavy Duty Wall Mounting Bracket**—No additional brackets or modifications required (WH models only).
- **Voltages Available: 120V, 208, 240V.**
- **Single Phase Operation Only.**
- **T&P Relief Valve**—Included.
- **Pressure Ratings**—150 PSI (10.3 bar) working pressure and 300 PSI (20.7 bar) test pressure.



Wall Hung ("WH" Models)



Floor Standing ("L" Models)



6-Year Limited Tank Warranty / 1 Year Limited Warranty on Component Parts.

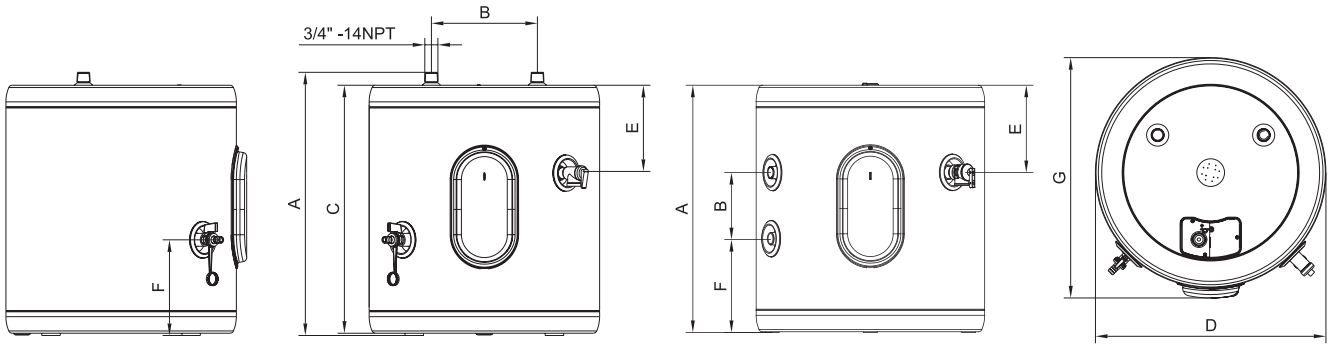
For more information on warranty, please visit www.bradfordwhite.com

Lowboy, Utility & Wall-Hung

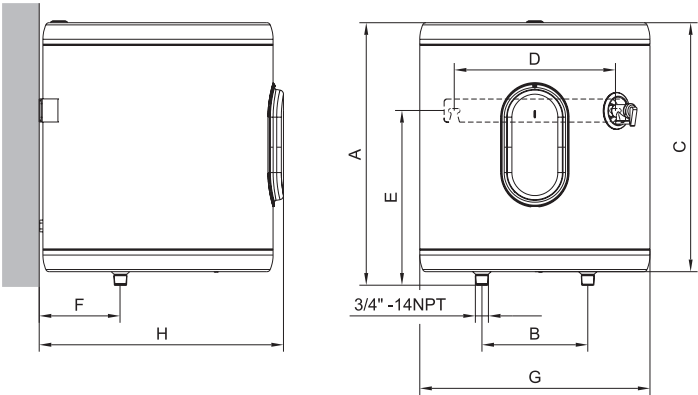
Residential Electric Water Heater

SPECIFICATIONS

Model Number	Capacity		A		B		C		D		E		F		G		Approx. Shipping Weight	
	Gal.	Liters	in.	mm.	in.	mm.	in.	mm.	in.	mm.	in.	mm.	in.	mm.	in.	mm.	lbs.	kg.
BW12-L	12	45	22.4	570	9.1	230	21.2	539	19.7	500	7.5	191	8.1	205	20.9	530	57.3	26
BW20-L	19	72	29.3	745	9.1	230	28.1	714	19.7	500	7.5	191	8.1	205	20.9	530	70.8	32
BW30-R	30	114	38.6	980	9.1	230	37.6	954	19.7	500	7.5	191	8.1	205	20.9	530	92.6	42
BW12-U	12	45	21.3	540	5.1	130	—	—	19.7	500	7.5	191	8.1	205	20.9	530	57.3	26
BW20-U	19	72	26.2	664	10.0	255	—	—	19.7	500	7.5	191	8.1	205	20.9	530	70.8	32
BW30-U	30	114	37.6	954	21.5	545	—	—	19.7	500	7.5	191	8.1	205	20.9	530	92.6	42



Model Number	Capacity		A		B		C		D		E		F		G		H		Approx. Shipping Weight	
	Gal.	Liters	in.	mm.	in.	mm.	in.	mm.	in.	mm.	in.	mm.	in.	mm.	in.	mm.	in.	mm.	lbs.	kg.
BW12-WH	12	45	22.4	568	9.1	230	21.2	539	13.8	350	14.9	378	7.0	177	19.7	500	21.5	545	57.3	26
BW20-WH	19	72	27.3	694	9.1	230	26.1	664	13.8	350	21.8	553	7.0	177	19.7	500	21.5	545	70.8	32
BW30-WH	30	114	38.6	980	9.1	230	37.6	954	13.8	350	35.9	896	7.0	177	19.7	500	21.5	545	92.6	42



Nominal Power (W)	1500	2000	1000	2000	3500	1500	2500	4500
Nominal Voltage at (VAC)	120	120	208	208	208	240	240	240
Amperage (A)	12.5	16.7	4.8	9.6	16.8	6.3	10.4	18.8
Recovery Rate at 90 °F Raise (Gal./Hr.)	7	9	5	9	16	7	11	21

All water connections are 3/4" NPT.
Temperature range is approximately 90°F - 150°F (32°C - 66°C).

GENERAL:

Models are of European manufacture and are built in accordance with UL® standards. All models certified at 300 PSI test pressure (20.7 Bar) and 150 PSI working pressure (10.3 Bar).

Dimensions and specifications subject to change without notice in accordance with our policy of continuous product improvement.



Telephone: 800-523-2931 • Email: international@bradfordwhite.com
Technical Support: 800-334-3393 • Email: export.techsupport@bradfordwhite.com
©2025, Bradford White Corporation, USA. All rights reserved.