

# Vertical Wall Hung Electric Residential Water Heaters

## Features

 Bradford White is an ISO 9001-2015 registered manufacturing facility.

- **Certified to IEC 60335.**
- **Glass Lined Steel Tank.**
- **40 mm (1.6") Non-CFC Polyurethane Foam Insulation.**
- **Integral Heating Element and Thermostat With Manual High Limit.**
  - Flange style element transfers heat directly and efficiently to the water.
  - Adjustable thermostat sensor immersed in the water for accurate temperature control.
- **Pilot Lights**—Indicate that the elements are actively heating the water.
- **Temperature Indicator.**
- **Protective Anode Rod**—Provides added protection against corrosion for long-term, trouble-free service.
- **Water Connections—G1/2 (BSPP)**—Color-coded for ease of installation.
- **Powder Coated External Jacket.**
- **Rated Power & Voltage is 2kW at 230V.**
- **Operating Voltage Range is 220V to 240V.**
- **Operating Frequency is 50 or 60 Hz.**
- **Single Phase Operation Only.**



**6-Year Limited Tank Warranty / 1-Year Limited Warranty on Component Parts.**

For more information on warranty, please visit [www.bradfordwhite.com](http://www.bradfordwhite.com)

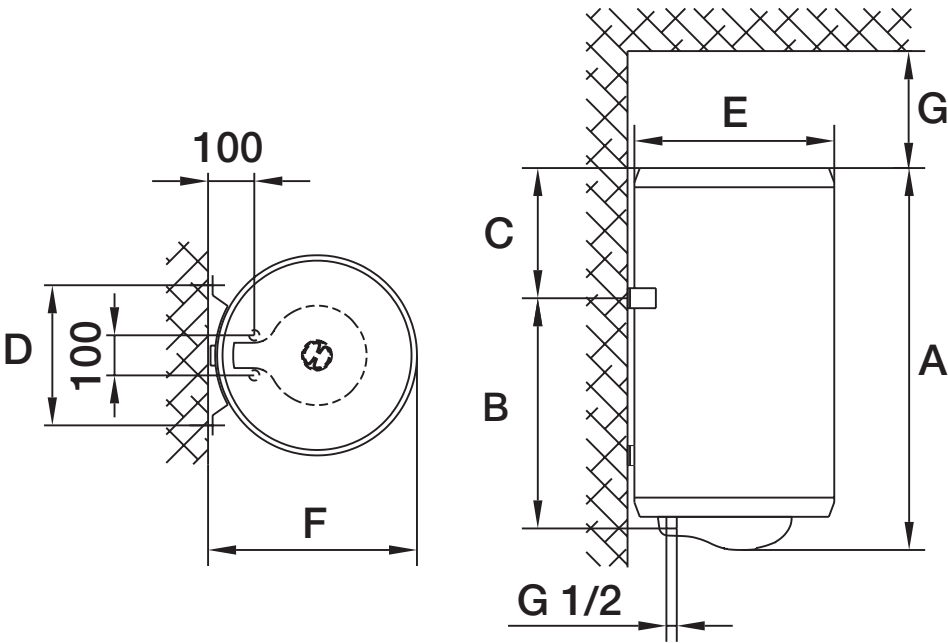
INT219-0725

# Vertical Wall Hung Electric Residential Water Heaters

## SPECIFICATIONS

| Model Number | Liters | kW Input | A    |      | B    |     | C   |     | D    |     | E    |     | F   |     | G   |     | Approx. Shipping Weight |     |
|--------------|--------|----------|------|------|------|-----|-----|-----|------|-----|------|-----|-----|-----|-----|-----|-------------------------|-----|
|              |        |          | in.  | mm.  | in.  | mm. | in. | mm. | in.  | mm. | in.  | mm. | in. | mm. | in. | mm. | lbs.                    | kg. |
| BW50V        | 50     | 2.0      | 22.4 | 570  | 14.4 | 365 | 7.3 | 185 | 13.8 | 350 | 19.7 | 500 | 20  | 507 | 7.3 | 185 | 59                      | 27  |
| BW80V        | 80     | 2.0      | 30.5 | 775  | 22.2 | 565 | 7.5 | 190 | 13.8 | 350 | 19.7 | 500 | 20  | 507 | 7.3 | 185 | 76                      | 33  |
| BW100V       | 100    | 2.0      | 36.8 | 935  | 28.1 | 715 | 7.9 | 200 | 13.8 | 350 | 19.7 | 500 | 20  | 507 | 7.3 | 185 | 82                      | 38  |
| BW120V       | 120    | 2.0      | 42.9 | 1090 | 34.1 | 865 | 8.1 | 205 | 13.8 | 350 | 19.7 | 500 | 20  | 507 | 7.3 | 185 | 93                      | 43  |
| BW150V       | 150    | 2.0      | 51.5 | 1307 | TBD  | TBD | TBD | TBD | 13.8 | 350 | 19.7 | 500 | 20  | 507 | 7.3 | 185 | 108                     | 49  |

- All Water Connections are G1/2 (BSPP)
- KSA models are supplied with T&P relief valve (10 bar/145 psi, 90°C/194°F)
- GCC & -EXP models do not come standard with T&P valve



### GENERAL:

All models are manufactured in accordance with IEC Standards and have an IP23 rating. All models certified to EN-standard 20 bar (290 PSI) test pressure and up to 9 bar (131 PSI) working pressure. SASO 2884 certification on select models. See your local authorized representative for models available.

*Dimensions and specifications subject to change without notice in accordance with our policy of continuous product improvement.*