

AeroTherm®

Hybrid Electric Heat Pump Water Heater

Features

- **ENERGY STAR® Certified.**
- **Vitraglas® Lining with Microban®**—An exclusively engineered enamel formula that provides superior tank protection from the corrosive effects of water; and with Microban® antimicrobial product protection to help prevent the growth of bacteria, mold and mildew on the surface of the tank lining.
- **The AeroTherm® Series Control Panel**—Displays current status, mode, set point, and applicable error messages. Also provides detailed diagnostics including fault, tank, and heat pump codes.
- **Operating Modes Offer Flexibility.**
 - Heat Pump (Only)—Maximizes savings, most energy efficient mode.
 - Hybrid Standard—Factory setting combining heat pump efficiency with standard electric recovery rates when needed (upper heating element operation only).
 - Hybrid Plus—Maximizes recovery using both heat pump and lower electrical element simultaneously.
 - Electric (Only)—Operates like a standard electric water heater, eliminating airflow and sound (least energy efficient).
 - Vacation—Adjusts the temperature set point down to 50°F (10°C) for extended periods of time.

Additional Details

- **Packaging Can be Laid on its Back for Transportation Flexibility**—Easy-to-open, protective packaging.
- **Easily Accessible Top Mounted Washable Air Filter**—User is automatically alerted when the air filter needs to be cleaned.
- **Operating Air Temperature Range of 35-120°F (2-49°C) for the Heat Pump**—Unit operates in Standard/Electric Mode outside of this range.
- **Backup Immersed Electric Heating Elements**—Transfers heat directly and efficiently to the water. Screw-in style.
- **Insulation System**—Non-CFC foam insulation covers the tank, reducing heat loss, energy consumption, and improves efficiency and jacket rigidity.
- **Factory-Installed Heat Traps**—Incorporates a flexible disk that reduces heat loss in piping and prevents noise.
- **Water Connections**—3/4" (19mm) NPT factory-installed true dielectric fittings extend water heater life and simplify water line connections.
- **Protective Anode Rod**—Provides added protection against corrosion for long-term, trouble-free service.
- **T&P Relief Valve**—Installed.
- **Low Restrictive Brass Drain Valve**—Durable tamper proof design.
- **Compatible With Bradford White Connect™ Kit**—Turns a Bradford White Water Heater into a smart, app-controlled appliance. Contractor version offers remote diagnostics with homeowner permission.
- **Meets Requirements for Tier 2 of Advanced Water Heating Specification (AWHS).**
- **Optional Ducting Kit**—Maximum duct length of 75 feet (23m) combined between inlet and exhaust.



Photo is of RE2H50S10



6 or 10-Year Limited Tank Warranties / 6 or 10-Year Limited Warranty on Component Parts.

For more information on warranty, please visit www.bradfordwhite.com

For products installed in USA, Canada, and Puerto Rico. See complete copy of the warranty included with the heater for limitations.

Microban® antimicrobial product protection helps prevent the growth of bacteria, mold and mildew that may affect the product. The built-in antimicrobial properties do not protect users or others from disease-causing organisms. Microban® is a registered trademark of Microban Products Company.

C1902-0725 CANADA

AeroTherm®

Hybrid Electric Heat Pump Water Heater



SPECIFICATIONS

Electric

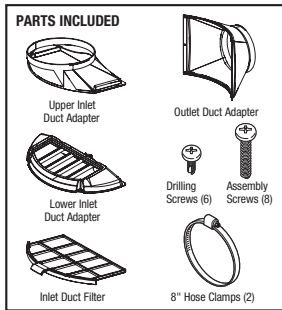
These water heaters meet or exceed all or portions of (where applicable) the minimum efficiency requirements of ASHRAE Standard 90.1 (latest edition).

Model Number	Rated Nominal Volume		First Hour Rating	Uniform Energy Factor	Recovery at 90°F Rise*				A Floor to Top of Heater in.	B Jacket Dia. in.	C Floor to Water Conn. in.	D C/L of Water Conn. in.	E Floor to T&P Conn. in.	F Floor to Condensate Conn. in.	G Water Conn. Size NPT in.	Approx. Shipping Weight lbs.
					U.S. GPH		Imp. GPH									
	U.S. Gal.	Imp. Gal.			Compressor Only	Compressor +Element	Compressor Only	Compressor +Element								
★ RE2H50S10	50	42	65	3.44	6	24	5	20	59 3/16	21 3/4	60 3/4	8	38 7/8	46 13/16	3/4	195
★ RE2H65T10	65	54	79	3.64	6	24	5	20	63 3/4	25	65 1/2	8	42 7/8	51 3/8	3/4	236
★ RE2H80T10	80	67	88	3.59	6	24	5	20	70 13/16	25	73 1/2	8	50 3/8	58 11/16	3/4	259

Model Number	Rated Nominal Volume		First Hour Rating	Uniform Energy Factor	Recovery at 50°C Rise*		A Floor to Top of Heater mm.	B Jacket Dia. mm.	C Floor to Water Conn. mm.	D C/L of Water Conn. mm.	E Floor to T&P Conn. mm.	F Floor to Condensate Conn. mm.	G Water Conn. Size NPT mm.	Approx. Shipping Weight kg.
					Liters/Hour									
	Liters	Liters			Compressor Only	Compressor +Element								
★ RE2H50S10	189	246	3.44	23	91	1503	552	1543	203	987	1189	19	88	
★ RE2H65T10	246	299	3.64	23	91	1619	635	1664	203	1216	1305	19	107	
★ RE2H80T10	303	333	3.59	23	91	1799	635	1867	203	1280	1491	19	117	

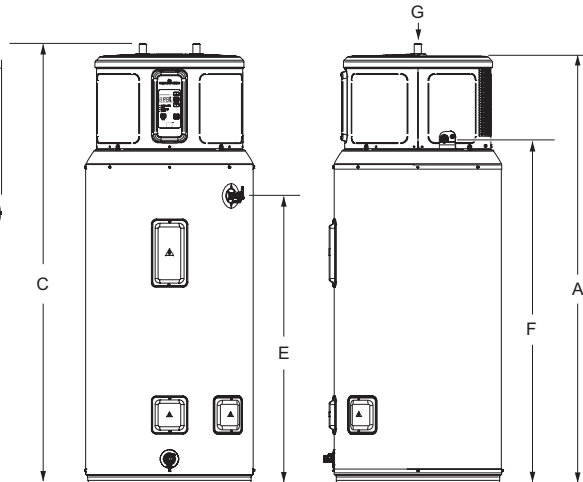
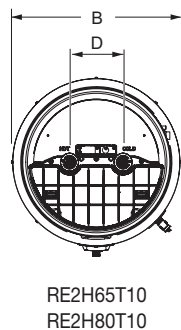
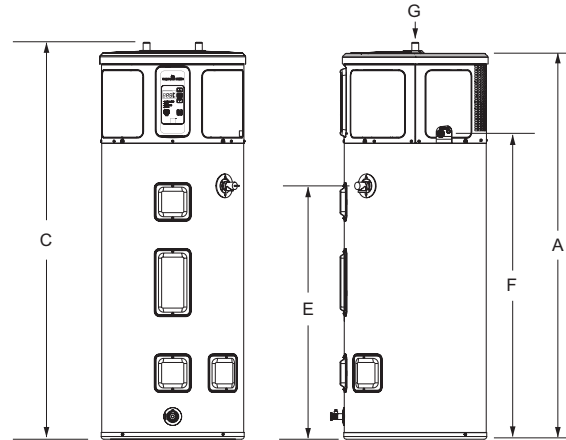
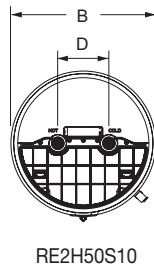
* Based on Hybrid Standard Mode with 67.5°F ambient temperature and 50% relative humidity (RH). For 6 year models, change suffix from "10" to "6". Uniform Energy Factor and First Hour Rating is based on the latest AHRI directory listings.

★ = ENERGY STAR® Qualified.



Optional Ducting Kit: Part No. 415-52820-00

Kit installation also requires - 8" (203mm) insulated flexible ducting, ducting support hangers and exterior wall vents for inlet & outlet. Additional clearances required for ducting, refer to ducting kit instructions.



GENERAL:

Meets NAECA Requirements. All models are UL listed. These heaters are wired inter-locking (Non-Simultaneous, Single Phase) 240V/208V with 4000W/3000W upper element and 4000W/3000W lower element. All water connections are 3/4" (19mm) NPT. All models certified at 300 PSI test pressure (2068 kPa) and 150 PSI working pressure (1034 kPa).

Toxic chemicals, such as those used for boiler treatment, shall NEVER be introduced into this system. This unit may NEVER be connected to any existing heating system or component(s) previously used with a non-potable water heating appliance.

Dimensions and specifications subject to change without notice in accordance with our policy of continuous product improvement.



Customer Service / Sales: 1-866-690-0961 / 905-203-0600
24/7 Technical Support: 800-334-3393 • Email TechServ@bradfordwhite.com

©2025, Bradford White Corporation, USA. All rights reserved.

C1902-0725 CANADA