

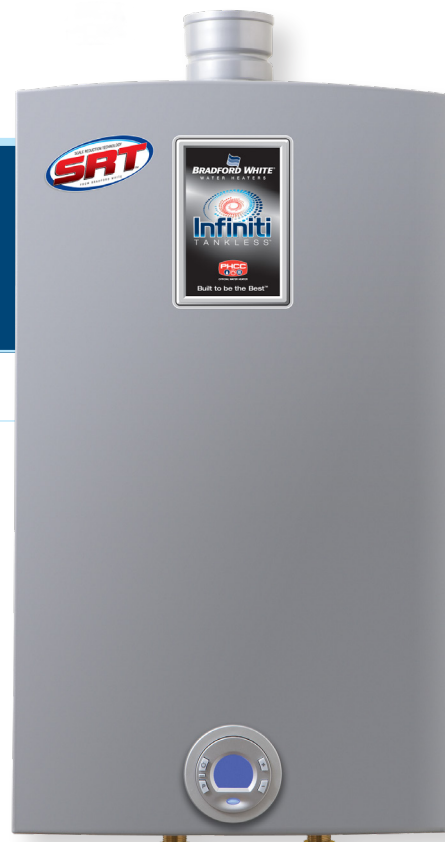
# Infiniti® Mid Efficiency Tankless Gas Non-condensing Water Heater

## Features

- **SRT™ Scale Reduction Technology**—Significantly reduces the incidence of scale build-up known to result in poor performance, additional maintenance, and premature component or product failure.

## Additional Details

- **Complies with the latest Ultra-Low NOx requirement (14 ng/J NOx limit).**
- **Built-in Digital Control**—Front control panel (100 -140°F) (38° - 60°C). Can store up to 10 previous error codes. Multiple indicators for ease of monitoring.
- **High Temperature Kit (Optional)**—Optional high temperature kit allows for a maximum setpoint up to 184°F (84°C).
- **Active Bypass**—Achieves superior temperature stability.
- **Intelligent Cascading Kit (Optional)**—Up to 24 units can be connected together with ease.
- **Built In Freeze Protection**—Activates automatically when the water heater is plugged in.
- **Interior and Exterior Installation Capability**—Outdoor installation requires optional outdoor kit. Recess box and pipe enclosure available.
- **Easy Installation and Service Features:**
  - Gas Connection Flexibility – 1/2" (13mm), 3/4" (19mm), or 1" (25mm) connections permitted (refer to I&O manual for details).
  - Space Saving Installation – Compact size for tight installations.
  - Inlet Water Filter – External access for easy maintenance.



RTG-199ME-N



**12-Year Limited Residential Heat Exchanger Warranty / 5-Year Limited Parts Warranty.**

For more information on warranty, please visit [www.bradfordwhite.com](http://www.bradfordwhite.com)

For products installed in USA, Canada, and Puerto Rico. See complete copy of the warranty included with the heater for limitations.

C150-0725 CANADA

# Infiniti® Mid Efficiency

## Tankless Gas Non-condensing Water Heater



### SPECIFICATIONS

Natural Gas and Liquid Propane Gas

These water heaters meet or exceed all or portions of (where applicable) the minimum efficiency requirements of ASHRAE Standard 90.1 (latest edition).

Model Number	Installation		Nat. BTU/Hr. Input		LP BTU/Hr. Input		Vent Conn.	GPM Flow Rate at °F Temperature Rise			Uniform Energy Factor Nat. and LP	Minimum Water Flow GPM	Maximum Temperature Setting
							in.	45°F	75°F	90°F			
RTG-199ME-N	Indoor / Outdoor*		19,900-199,000		19,900-199,000		3	7.3	4.4	3.7	0.82	0.5	140°F
Model Number	Installation		Nat. kW Input		LP kW Input		Vent Conn.	LPM Flow Rate at °C Temperature Rise			Uniform Energy Factor Nat. and LP	Minimum Water Flow LPM	Maximum Temperature Setting
							mm.	25°C	41.7°C	50°C			
RTG-199ME-N	Indoor / Outdoor*		5.6 - 58.3		5.6 - 58.3		76	27.7	16.6	13.9	0.82	1.9	60°C
Model Number	A Height	B Width	C Depth	D Intake/Exhaust Center Line	G Hot Water Outlet	H Cold Water Inlet	I Hot Water Outlet	J Gas Conn.	K Condensate Tee	L Condensate Tee	M Gas Conn.	Approx. Shipping Weight	
	in.	in.	in.	in.	in.	in.	in.	in.	in.	in.	in.	lbs.	
RTG-199ME-N	30 9/16	17 13/16	10 7/16	5 3/16	6 9/16	6 1/8	6 5/16	2 11/16	2 3/8	2 5/8	7 1/2	67	
Model Number	A Height	B Width	C Depth	D Intake/Exhaust Center Line	G Hot Water Outlet	H Cold Water Inlet	I Hot Water Outlet	J Gas Conn.	K Condensate Tee	L Condensate Tee	M Gas Conn.	Approx. Shipping Weight	
	mm	mm	mm	mm	mm	mm	mm	mm	mm	mm	mm	kg.	
RTG-199ME-N	776	452	265	132	167	156	160	68	60	67	191	30.5	

For Propane (LP) Models change suffix "N" to "X".

Requires an electrical power supply from a 120VAC 60Hz., properly rated receptacle and must be properly grounded. Power supply cord provided.

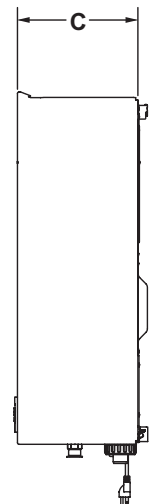
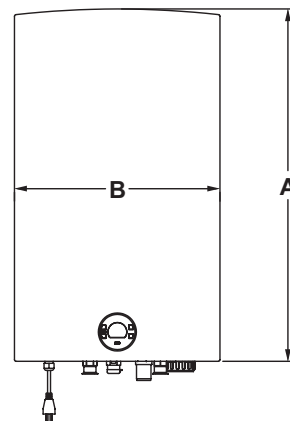
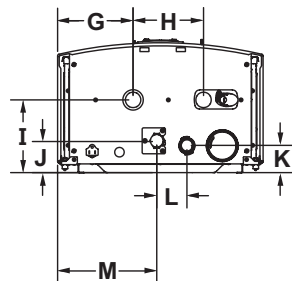
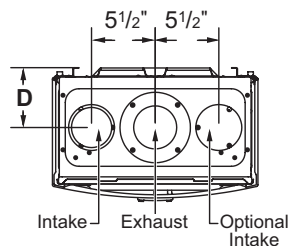
\* Outdoor installation requires optional outdoor kit.

Uniform Energy Factor is based on the latest AHRI directory listings.

Intelligent Cascading Kit: Part No. 7736502750 (One for each additional water heater)

Venting	Maximum allowable exhaust vent length	Maximum allowable intake vent length	Combined maximum allowable vent	Elbow Equivalency	
				90°	45°
3"	28.5 ft.	28.5 ft.	57.0 ft.	5.0 ft.	2.5 ft.
4"	61.25 ft.	61.25 ft.	122.5 ft.	5.0 ft.	2.5 ft.

Maximum number of 90° elbows	3" Venting	4" Venting
Maximum number of elbows	5	7



### GENERAL:

Meets NAECA Requirements. All potable water connections are 3/4" NPT (19mm). Gas connections are 3/4" (19mm). Recommended gas pipe size is 3/4" (19mm), for other gas pipe sizes please consult installation and operation manual.

**Suitable for Water (Potable) Heating and Space Heating.** Toxic chemicals, such as those used for boiler treatment, shall NEVER be introduced into this system. This unit may NEVER be connected to any existing heating system or component(s) previously used with a non-potable water heating appliance.

*Dimensions and specifications subject to change without notice in accordance with our policy of continuous product improvement.*



Customer Service / Sales: 1-866-690-0961 / 905-203-0600

24/7 Technical Support: 800-334-3393 • Email TechServ@bradfordwhite.com

©2025, Bradford White Corporation, USA. All rights reserved.

C150-0725 CANADA