

Light-Duty Power Vent Commercial Gas Water Heater

Features

- **Defender Safety System®**—Designed to be the safest & most reliable flammable vapor ignition resistant system in the industry with a proven track record since 2003. Featuring an advanced ScreenLok® technology flame arrestor design, sight window, and designed to be maintenance-free.
- **Bradford White ICON System®**—Intelligent gas control that eliminates constant burning pilot, saving gas during standby periods (120 VAC). Proprietary algorithms provide tighter temperature differential and consistent water temperature levels up to 180°F (82°C). LED light indicates pilot function or operation status/service required.
- **Vitraglas® Lining with Microban®**—An exclusively engineered enamel formula that provides superior tank protection from the corrosive effects of water; and with Microban® antimicrobial product protection to help prevent the growth of bacteria, mold and mildew on the surface of the tank lining.
- **Hydrojet® Total Performance System**—Sediment reducing device that also increases first hour rating of hot water while minimizing temperature build-up in tank.



Photo is of LG2PV50H653N

Additional Details

- **Powerful Blower Motor**—Quiet design has greater resistance to outside winds and the power to vent in many difficult venting situations. Includes 10-foot (3m) power cord (120 VAC).
- **Horizontal and Vertical Venting**—Designed for installations unsuitable for atmospheric units. Exhaust gases vented under positive pressure through roof or wall using PVC, ABS, or CPVC.
- **High Altitude Ready**—Certified for installations up to 10,100 feet (3078m) out of the box. No conversion kit required.
- **Insulation System**—Non-CFC foam covers the sides and top of the tank, reducing heat loss. This results in less energy consumption, improved efficiencies, and jacket rigidity.
- **Water Connections**—3/4" (19mm) NPT factory-installed true dielectric fittings extend water heater life and simplify water line connections.
- **3/4" (19mm) NPT Side Connections**—3/4" (19mm) NPT tapings that allow easy connections for space heating applications (potable water only).
- **Factory-installed Heat Traps**—Design incorporates a flexible disk that reduces heat loss in piping and eliminates the potential for noise generation.
- **Protective Anode Rod**—Provides added protection against corrosion for long-term, trouble-free service.
- **T&P Relief Valve**—Installed.
- **Thermostatic Mixing Valve (ASSE Approved)**—Included.
- **Low Restrictive Brass Drain Valve**—Durable tamper proof design
- **NOx Emissions**—Less than 40 ng/J.

Bradford White
DEFENDER
Safety System®

BRADFORD WHITE
ICON
System

VITRAGLAS
SUPERIOR PROTECTION SINCE 1981

+

PROTECTION THAT LIVES ON
MICROBAN
Hydrojet



3 or 5-Year Limited Tank Warranties / 1-Year Limited Warranty on Component Parts.

For more information on warranty, please visit www.bradfordwhite.com

For products installed in USA, Canada, and Puerto Rico. Microban® antimicrobial product protection helps prevent the growth of bacteria, mold and mildew that may affect the product. The built-in antimicrobial properties do not protect users or others from disease-causing organisms. Microban® is a registered trademark of Microban Products Company.

C1355-0825 CANADA

Light-Duty Power Vent Commercial Gas Water Heater



SPECIFICATIONS

NATURAL GAS AND LIQUID PROPANE GAS

These water heaters meet or exceed all or portions of (where applicable) the minimum efficiency requirements of ASHRAE Standard 90.1 (latest edition) 80% Recover Efficiency.

Model Number	Rated Nominal Volume				First Hour Rating	Uniform Energy Factor	Recovery at 100°F Rise*				Model Number	Rated Nominal Volume			First Hour Rating	Uniform Energy Factor	Recovery at 56°C Rise*	
	U.S. Gal.	Imp. Gal.	BTU/Hr. Input	LP BTU/Hr. Input			U.S. GPH	Imp. GPH	LP U.S. GPH	LP Imp. GPH			Liters	kW Input			LP kW Input	Liters
LG2PV50H653N	48	42	65,000	60,000	116	0.68	63	52	56	47	LG2PV50H653N	182	19.1	17.6	440	0.68	238	212
LG1PV55H783N	55	46	78,000	76,000	116	0.68	76	63	74	62	LG1PV55H783N	208	22.9	22.3	440	0.68	288	280
LG2PV75H763N	75	62	76,000	75,500	121	0.69	74	62	73	61	LG2PV75H763N	284	22.3	22.1	459	0.69	280	276
Model Number	A Floor to Top of Blower in.	B Jacket Dia. in.	C Vent Size in.	D Floor to T&P Conn. in.	E Floor to Gas Conn. in.	F Floor to Top of Heater in.	G Floor to Water Conn. in.	H Depth in.	J C/L of Water Conn. in.	K Floor to Space Heating Inlet in.	L Floor to Space Heating Outlet in.	M Water Conn. NPT in.	R Space Heating Conn. Size in.	S Gas Conn. Size in.	Approx. Shipping Weight lbs.			
LG2PV50H653N	66 ^{11/16}	22	3 or 4	49 ^{7/8}	11 ^{1/2}	56 ^{11/16}	57 ^{7/16}	26 ^{11/16}	11	13 ^{3/8}	49 ^{7/8}	3/4	3/4	1/2	186			
LG1PV55H783N	65 ^{13/16}	22	3 or 4	47 ^{15/16}	11 ^{7/16}	54 ^{11/16}	55 ^{13/16}	27 ^{7/8}	11	13 ^{3/8}	47 ^{15/16}	3/4	3/4	1/2	253			
LG2PV75H763N	70 ^{7/16}	26	3 or 4	51 ^{7/8}	13 ^{11/16}	59 ^{3/8}	60 ^{3/4}	30 ^{1/2}	11	16 ^{5/8}	51 ^{7/8}	3/4	3/4	1/2	252			
Model Number	A Floor to Top of Blower mm.	B Jacket Dia. mm.	C Vent Size mm.	D Floor to T&P Conn. mm.	E Floor to Gas Conn. mm.	F Floor to Top of Heater mm.	G Floor to Water Conn. mm.	H Depth mm.	J C/L of Water Conn. mm.	K Floor to Space Heating Inlet mm.	L Floor to Space Heating Outlet mm.	M Water Conn. NPT mm.	R Space Heating Conn. Size mm.	S Gas Conn. Size mm.	Approx. Shipping Weight kg.			
LG2PV50H653N	1694	559	76 or 102	1267	292	1440	1459	678	279	340	1267	19	19	13	84			
LG1PV55H783N	1671	559	76 or 102	1218	291	1389	1418	708	279	340	1218	19	19	13	115			
LG2PV75H763N	1789	660	76 or 102	1318	348	1508	1543	775	279	422	1318	19	19	13	114			

Propane models feature a Titanium Stabilized Stainless Steel propane burner.

For propane (LP) models, change suffix "N" to "X".

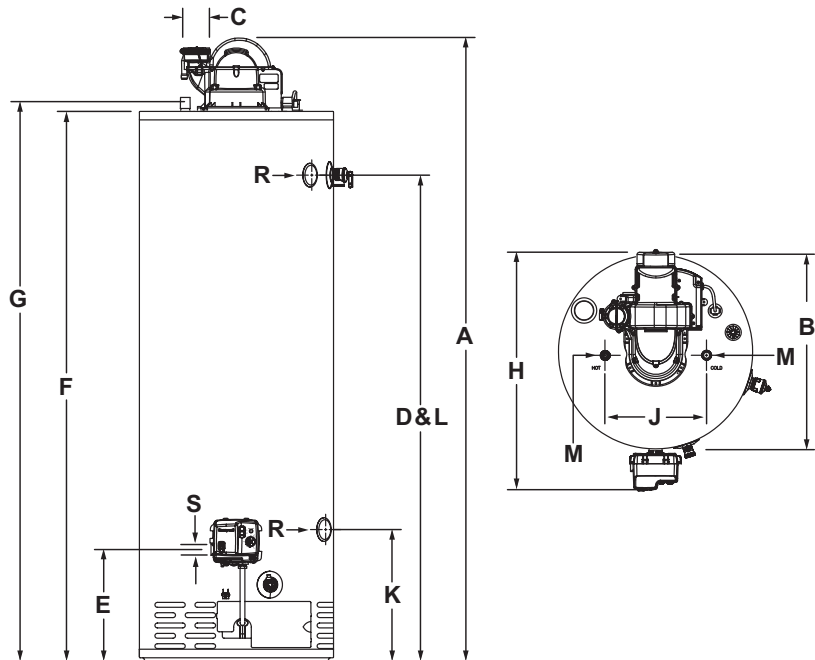
Uniform Energy Factor and First Hour Rating is based on the latest AHRI directory listings.

Optional Condensate Neutralizer Kit: p/n A2123601.

LG2PV50H653N LG1PV55H783N LG2PV75H763N	3" Vent Pipe	4" Vent Pipe
	†75 ft.	†180 ft.
Max. Equivalent Length	†75 ft.	†180 ft.
Min. Equivalent Length	60 ft.	15 ft.
Number of 90° Elbows	1 70 ft. 2 65 ft. 3 60 ft.	175 ft. 170 ft. 165 ft.
LG2PV50H653N LG1PV55H783N LG2PV75H763N	76mm Vent Pipe	102mm Vent Pipe
	†23.0m	†55.0m
Max. Equivalent Length	†23.0m	†55.0m
Min. Equivalent Length	2.1m	4.6m
Number of 90° Elbows	1 21.3m 2 20.0m 3 18.3m	53.3m 52.0m 50.3m

Subtract 5ft. (1.5m) for each additional 90° elbow.

† For high altitude installations, consult the installation instructions.



GENERAL:

All gas water heaters are certified at 300 PSI test pressure (2068 kPa) and 150 PSI working pressure (1034 kPa). All water connections are 3/4" NPT (19mm) on 11" (279mm) centers, all gas connections are 1/2" (13mm). All models design-certified by CSA International, ANSI standard Z21.10.1 (LG2PV75H763N = ANSI Z21.10.3) and peak performance rated

Suitable for Water (Potable) Heating and Space Heating. Toxic chemicals, such as those used for boiler treatment, shall NEVER be introduced into this system. This unit may NEVER be connected to any existing heating system or component(s) previously used with a non-potable water heating appliance.

Dimensions and specifications subject to change without notice in accordance with our policy of continuous product improvement.



Customer Service / Sales: 1-866-690-0961

24/7 Technical Support: 800-334-3393 • Email: TechServ@bradfordwhite.com

©2025, Bradford White Corporation, USA. All rights reserved.

C1355-0825 CANADA