

Infiniti® Mid Efficiency Tankless Gas Non-condensing Water Heater

Features

- **SRT™ Scale Reduction Technology**—Significantly reduces the incidence of scale build-up known to result in poor performance, additional maintenance, and premature component or product failure.

Additional Details

- **Complies with the latest Ultra-Low NOx requirement (14 ng/J NOx limit).**
- **Built-in Digital Control**—Front control panel (100 -140°F) (38° - 60°C). Can store up to 10 previous error codes. Multiple indicators for ease of monitoring.
- **High Temperature Kit (Optional)**—Optional high temperature kit allows for a maximum setpoint up to 184°F (84°C).
- **Active Bypass**—Achieves superior temperature stability.
- **Intelligent Cascading Kit (Optional)**—Up to 24 units can be connected together with ease.
- **Built In Freeze Protection**—Activates automatically when the water heater is plugged in.
- **Interior and Exterior Installation Capability**—Outdoor installation requires optional outdoor kit. Recess box and pipe enclosure available.
- **Easy Installation and Service Features:**
 - Gas Connection Flexibility – 1/2" (13mm), 3/4" (19mm), or 1" (25mm) connections permitted (refer to I&O manual for details).
 - Space Saving Installation – Compact size for tight installations.
 - Inlet Water Filter – External access for easy maintenance.



12-Year Limited Residential Heat Exchanger Warranty / 5-Year Limited Parts Warranty.

For more information on warranty, please visit www.bradfordwhite.com

For products installed in USA, Canada, and Puerto Rico. See complete copy of the warranty included with the heater for limitations.

Infiniti[®] Mid Efficiency Tankless Gas Non-condensing Water Heater



SPECIFICATIONS

Natural Gas and Liquid Propane Gas

These water heaters meet or exceed all or portions of (where applicable) the minimum efficiency requirements of ASHRAE Standard 90.1 (latest edition).

Model Number	Installation	Nat. BTU/Hr. Input	LP BTU/Hr. Input	Vent Conn. in.	GPM Flow Rate at °F Temperature Rise			Uniform Energy Factor Nat. and LP	Minimum Water Flow GPM	Maximum Temperature Setting
					45°F	75°F	90°F			
RTG-199ME-N	Indoor / Outdoor*	19,900-199,000	19,900-199,000	3	7.3	4.4	3.7	0.82	0.5	140°F

Model Number	Installation	Nat. kW Input	LP kW Input	Vent Conn. mm.	LPM Flow Rate at °C Temperature Rise			Uniform Energy Factor Nat. and LP	Minimum Water Flow LPM	Maximum Temperature Setting
					25°C	41.7°C	50°C			
RTG-199ME-N	Indoor / Outdoor*	5.6 - 58.3	5.6 - 58.3	76	27.7	16.6	13.9	0.82	1.9	60°C

Model Number	A Height in.	B Width in.	C Depth in.	D Intake/Exhaust Center Line in.	G Hot Water Outlet in.	H Cold Water Inlet in.	I Hot Water Outlet in.	J Gas Conn. in.	K Condensate Tee in.	L Condensate Tee in.	M Gas Conn. in.	Approx. Shipping Weight lbs.
RTG-199ME-N	30 ⁹ / ₁₆	17 ¹³ / ₁₆	10 ⁷ / ₁₆	5 ³ / ₁₆	6 ⁹ / ₁₆	6 ¹ / ₈	6 ⁵ / ₁₆	2 ¹¹ / ₁₆	2 ³ / ₈	2 ⁵ / ₈	7 ¹ / ₂	67

Model Number	A Height mm	B Width mm	C Depth mm	D Intake/Exhaust Center Line mm	G Hot Water Outlet mm	H Cold Water Inlet mm	I Hot Water Outlet mm	J Gas Conn. mm	K Condensate Tee mm	L Condensate Tee mm	M Gas Conn. mm	Approx. Shipping Weight kg.
RTG-199ME-N	776	452	265	132	167	156	160	68	60	67	191	30.5

For Propane (LP) Models change suffix "N" to "X".

Requires an electrical power supply from a 120VAC 60Hz., properly rated receptacle and must be properly grounded. Power supply cord provided.

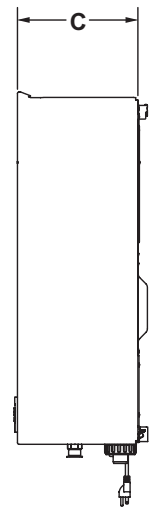
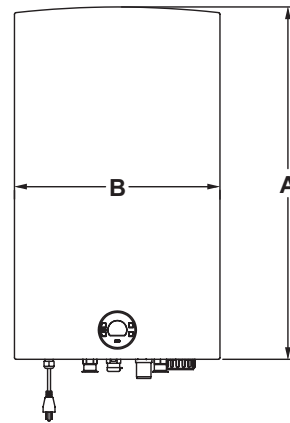
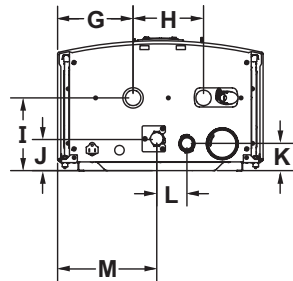
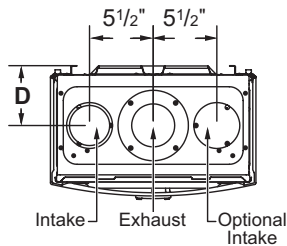
* Outdoor installation requires optional outdoor kit.

Uniform Energy Factor is based on the latest AHRI directory listings.

Intelligent Cascading Kit: Part No. 7736502750 (One for each additional water heater)

Venting	Maximum allowable exhaust vent length	Maximum allowable intake vent length	Combined maximum allowable vent	Elbow Equivalency	
				90°	45°
3"	28.5 ft.	28.5 ft.	57.0 ft.	5.0 ft.	2.5 ft.
4"	61.25 ft.	61.25 ft.	122.5 ft.	5.0 ft.	2.5 ft.

Maximum number of 90° elbows	3" Venting	4" Venting
Maximum number of elbows	5	7



GENERAL:

Meets NAECA Requirements. All potable water connections are 3/4" NPT (19mm). Gas connections are 3/4" (19mm). Recommended gas pipe size is 3/4" (19mm), for other gas pipe sizes please consult installation and operation manual.

Suitable for Water (Potable) Heating and Space Heating. Toxic chemicals, such as those used for boiler treatment, shall NEVER be introduced into this system. This unit may NEVER be connected to any existing heating system or component(s) previously used with a non-potable water heating appliance.

Dimensions and specifications subject to change without notice in accordance with our policy of continuous product improvement.



Sales: 800-523-2931

24/7 Technical Support: 800-334-3393 • Email TechServ@bradfordwhite.com

Products made by Bradford White are manufactured in America using the finest materials and components from around the world. ©2025, Bradford White Corporation, USA. All rights reserved.

