

Manufactured Home Atmospheric Vent Residential Gas Water Heater

Features

- **Defender Safety System**®—Designed to be the safest & most reliable flammable vapor ignition resistant system in the industry with a proven track record since 2003. Featuring an advanced ScreenLok® technology flame arrestor design, resettable thermal switch, sight window, and designed to be maintenance-free.
- **Bradford White ICON System**®—Intelligent gas control with no need for external electricity. Proprietary algorithms provide tighter temperature differential and consistent water temperature levels up to 160°F (70°C). LED light indicates pilot function or operation status/service required.
- **Vitraglas**® Lining with **Microban**®—An exclusively engineered enamel formula that provides superior tank protection from the corrosive effects of water; and with Microban® antimicrobial product protection to help prevent the growth of bacteria, mold and mildew on the surface of the tank lining.

Additional Details

- **Built in field convertibility between Propane or Natural Gas**—No additional purchase required.
- **Insulation System**—Non-CFC foam covers the tank, reducing heat loss, energy consumption, and improves efficiency and jacket rigidity.
- **Water Connections**—3/4" (19mm) NPT factory-installed true dielectric fittings extend water heater life and simplify water line connections.
- **Heat Traps**—Installed on hot water outlet to minimize heat loss through piping.
- **Protective Anode Rod**—Provides added protection against corrosion for long-term, trouble-free service.
- **T&P Relief Valve**—Installed.
- **Low Restrictive Brass Drain Valve**—Durable tamper proof design.
- **3"x4" "Snap Lock" Draft Diverter**—Allows either 3" (76mm) or 4" (102mm) vent connections with inputs of 40,000 BTU/Hr. or less.
- **Roof Jack Kit**—Ordered separately and includes a roof jack kit and hardware. Must specify roof jack size when ordering. Available in 12" (305mm), 18"/32" (457/813mm), 32"/60" (813/1524mm), or 48"/95" (1219/2413mm) lengths. **Must order roof jack kit for new installations.**
- **Housing and Urban Development**—These water heaters are designed in accordance with H.U.D. and are approved for installation in a manufactured home (mobile home) only and must be installed in an enclosure that will completely separate the water heater combustion and venting system from the dwelling interior.



Photo is of RG2MH30T6X

Bradford White
DEFENDER
Safety System

BRADFORD WHITE
ICON
System

VITRAGLAS
SUPERIOR PROTECTION SINCE 1987
+
MICROBAN



6 or 10-Year Limited Tank Warranties / 6-Year Limited Warranty on Component Parts.

For more information on warranty, please visit www.bradfordwhite.com

For products installed in USA, Canada, and Puerto Rico. See complete copy of the warranty included with the heater for limitations.

Microban® antimicrobial product protection helps prevent the growth of bacteria, mold and mildew that may affect the product. The built-in antimicrobial properties do not protect users or others from disease-causing organisms. Microban® is a registered trademark of Microban Products Company.

Manufactured Home Atmospheric Vent Residential Gas Water Heater

SPECIFICATIONS

Natural Gas and Liquid Propane Gas

These water heaters meet or exceed all or portions of (where applicable) the minimum efficiency requirements of ASHRAE Standard 90.1 (latest edition), C.E.C. Listed, 76% Recovery Efficiency.

Model Number	Nominal Gal. Capacity		DOE Rated Storage Volume (Gal.)	BTU/Hr. Input	LP BTU/Hr. Input	First Hour Rating (Gal.)	Uniform Energy Factor	Recovery at 90°F Rise*				Model Number	Nominal Liter Capacity	DOE Rated Storage Volume (Liters)	kW Input	LP kW Input	First Hour Rating (Liters)	Uniform Energy Factor	Recovery at 50°C Rise*	
	U.S. Gal.	Imp. Gal.						U.S. GPH	Imp. GPH	LP U.S. GPH	LP Imp. GPH								Liters/Hour	LP Liters/Hour
RG2MH30T6X	30	25	29	32,000	32,000	50	0.54	34	28	34	28	RG2MH30T6X	114	110	9.4	9.4	190	0.54	129	129
RG2MH40T6X	40	33	37	34,000	34,000	54	0.59	37	31	37	31	RG2MH40T6X	151	140	10.0	10.0	205	0.59	140	140

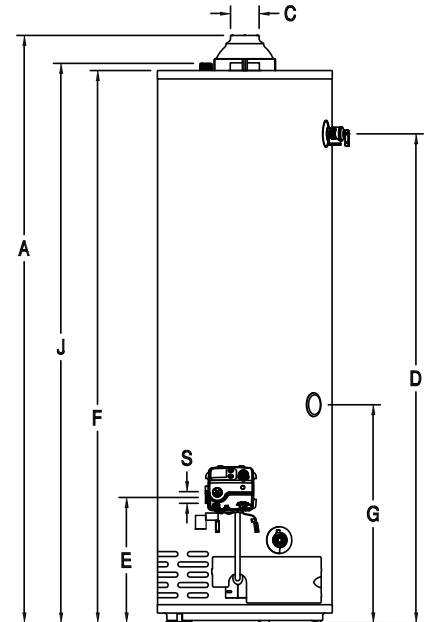
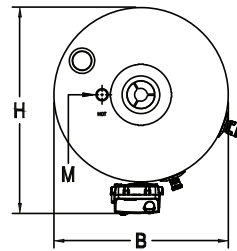
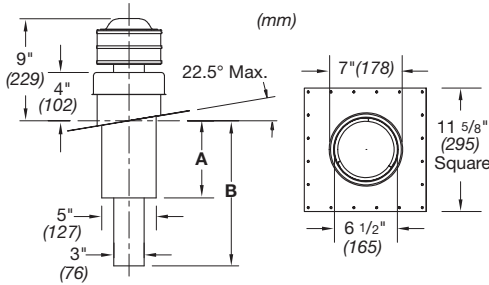
Model Number	A Floor to Flue Conn. in.	B Jacket Dia. in.	C Vent Size in.	D Floor to T&P Conn. in.	E Floor to Gas Conn. in.	F Floor to Top of Heater in.	G Floor to Cold Water Conn. in.	H Depth in.	J Floor to Hot Water Conn. in.	M Water Conn. NPT in.	S Gas Conn. Size in.	Approx. Shipping Weight lbs.
RG2MH30T6X	59 ¹⁵ / ₁₆	18	3 or 4	49 ¹¹ / ₁₆	12 ³ / ₄	56 ³ / ₈	21 ¹³ / ₁₆	21 ⁵ / ₈	57 ⁵ / ₈	³ / ₄	¹ / ₂	118
RG2MH40T6X	60 ³ / ₈	20	3 or 4	49 ¹¹ / ₁₆	13 ³ / ₈	56 ¹ / ₄	21 ¹³ / ₁₆	23 ³ / ₈	57 ¹³ / ₁₆	³ / ₄	¹ / ₂	135

Model Number	A Floor to Flue Conn. mm.	B Jacket Dia. mm.	C Vent Size mm.	D Floor to T&P Conn. mm.	E Floor to Gas Conn. mm.	F Floor to Top of Heater mm.	G Floor to Cold Water Conn. mm.	H Depth mm.	J Floor to Hot Water Conn. mm.	M Water Conn. NPT mm.	S Gas Conn. Size mm.	Approx. Shipping Weight kg.
RG2MH30T6X	1522	457	76 or 102	1262	324	1432	554	549	1464	19	13	54
RG2MH40T6X	1534	508	76 or 102	1262	340	1429	554	600	1468	19	13	61

To order a natural gas heater change suffix "X" to "N". For 10 year models, change suffix from "6" to "10".

* Based on manufacturer's rated recovery efficiency.

Uniform Energy Factor and First Hour Rating is based on the latest AHRI directory listings.



Optional Roof Jack Kits

Part Number	A (in.)	A (mm.)	B (in.)	B (mm.)	Through The Roof Clearance (in.)	Through The Roof Clearance (mm.)
415-37030-01	15"	381	16"-33"	406-838	12"	12"
415-37030-02	33 ¹ / ₂ "	851	33 ¹ / ₂ "-66"	851-1676	18" / 32"	305 / 813
415-37030-03	32 ¹ / ₂ "-62 ¹ / ₂ "	826-1588	37 ¹ / ₂ "-74"	953-1880	32" / 60"	813 / 1524
415-37030-04	50"-98 ¹ / ₂ "	1270-2502	54 ¹ / ₂ "-109 ¹ / ₂ "	1384-2781	48" / 90"	1219 / 2286

(Includes roof jack, hardware, instructions)

GENERAL:

Meets NAECA Requirements. All gas water heaters are certified at 300 PSI (2068 kPa) test pressure and 150 PSI (1034 kPa) working pressure. All water connections are 3/4" NPT (19mm). All gas connections are 1/2" (13mm). All models design-certified by CSA International (formerly AGA/CGA), ANSI Z21.10.1 and peak performance rated. This water heater is designed in accordance with H.U.D and is approved for installation in a manufactured home (mobile home).

Suitable for Water (Potable) Heating and Space Heating. Toxic chemicals, such as those used for boiler treatment, shall NEVER be introduced into this system. This unit may NEVER be connected to any existing heating system or component(s) previously used with a non-potable water heating appliance.

Dimensions and specifications subject to change without notice in accordance with our policy of continuous product improvement.



Sales: 800-523-2931

24/7 Technical Support: 800-334-3393 • Email TechServ@bradfordwhite.com

Products made by Bradford White are manufactured in America using the finest materials and components from around the world. ©2024, Bradford White Corporation, USA. All rights reserved.

