

Residential Manufactured Home Direct Vent Gas Water Heater



Photo is of
RG2DVMH30T6X

The Manufactured Home Models feature:

- **Housing and Urban Development**—This water heater is designed in accordance with H.U.D. and is certified for installation in a manufactured home (mobile home) only and must be installed in an enclosure that will completely separate the water heater combustion and venting system from the dwelling interior.
- **Sealed Combustion Roof Jack Kit**—Ordered separately and includes an adjustable air intake tube, roof jack and hardware. Must specify roof jack size when ordering. Available in 12" (305mm), 18"/32" (457/813mm), 32"/60" (813/1524mm), or 48"/95" (1219/2413mm) lengths.
— **Must order roof jack kit for new installations.**
- **Flue Baffle**—Designed to maximize the amount of heat absorbed in the lower portion of tank. Minimizes air movement in the heater during standby periods to decrease heat loss up the flue.
- **Heat Traps**—Installed on hot water outlet to minimize heat loss through piping.
- **Vitraglas® Lining**—An exclusively engineered enamel formula that provides superior tank protection from the highly corrosive effects of hot water. This formula (Vitraglas®) is fused to the steel surface by firing at a temperature of over 1600°F (871°C).
- **Fully Automatic Controls**—Fast acting surface-mount thermostat with high limit energy cut-off (manual reset) for safety.
- **Insulation System**—2" (51mm) Non-CFC foam insulation covers the sides and top of the tank, reducing heat loss. This results in less energy consumption, improved efficiencies, and jacket rigidity.
- **Water Connections**—3/4" (19mm) NPT factory-installed true dielectric fittings extend water heater life and simplify water line connections.
- **Protective Anode Rod**—Provides added protection against corrosion for long-term, trouble-free service.
- **T&P Relief Valve**—Installed.
- **Low Restrictive Brass Drain Valve**—Durable tamper proof design.
- **Convertible Gas Control**—Easily convertible control for use with either Propane or Natural Gas.



6 or 10-Year Limited Tank Warranties / 6 or 10-Year Limited Warranty on Component Parts.

For more information on warranty, please visit www.bradfordwhite.com

For products installed in USA, Canada, and Puerto Rico. Some states do not allow limitations on warranties.

See complete copy of the warranty included with the heater.

MANUFACTURED UNDER ONE OR MORE OF THE FOLLOWING U.S. PATENTS: 5,682,666; 7,634,976; 5,660,165; 5,954,492; 6,056,542; 6,935,280; 5,372,185; 5,485,879; 5,574,822; 7,971,560; 7,992,526; 6,684,821; 7,334,419; 7,866,168; 7,270,087; 7,007,748; 5,596,952; 6,142,216; 7,699,026; 5,341,770; 7,337,517; 7,665,211; 7,665,210; 7,063,132; 7,063,133; 7,559,293; 7,900,589; 5,943,984; 8,082,888; 5,988,117; 7,621,238; 7,650,859; 5,761,379; 7,409,925; 5,277,171; 8,146,772; 7,458,341; 2,262,174. OTHER U.S. AND FOREIGN PATENT APPLICATIONS PENDING. CURRENT CANADIAN PATENTS: 2,314,845; 2,504,824; 2,108,186; 2,143,031; 2,409,271; 2,548,958; 2,112,515; 2,476,685; 2,239,007; 2,092,105; 2,107,012. Vitraglas® is a registered trademark of Bradford White® Corporation.

Residential Manufactured Home Direct Vent Gas Water Heater

Manufactured Home Models

NATURAL GAS AND LIQUID PROPANE GAS

Meet or exceed ASHRAE 90.1b (current standard) C.E.C. Listed
76% Recovery Efficiency

Model Number	Nominal Gal. Capacity		DOE Rated Storage Volume (Gal.)	BTU/Hr. Input	LP BTU/Hr. Input	First Hour Rating (Gal.)	Uniform Energy Factor	Recovery at 90°F Rise*				Model Number	Nominal Liter Capacity	DOE Rated Storage Volume (Liters)	kW Input	LP kW Input	First Hour Rating (Liters)	Uniform Energy Factor	Recovery at 50°C Rise*	
	U.S. Gal.	Imp. Gal.						U.S. GPH	Imp. GPH	U.S. GPH	LP Imp. GPH								U.S. GPH	LP GPH
RG2DVMH30T6X	30	27	29	30,000	30,000	56	0.60	32	27	32	27	RG2DVMH30T6X	114	110	8.8	8.8	212	0.60	121	121
RG2DVMH40T6X	40	33	38	30,000	30,000	51	0.58	32	27	32	27	RG2DVMH40T6X	151	144	8.8	8.8	193	0.58	121	121

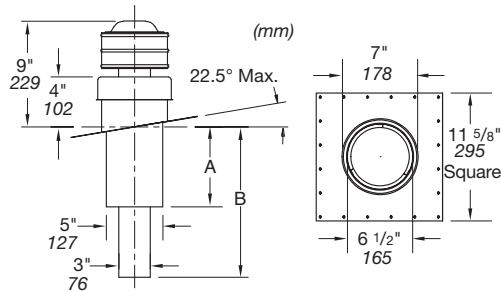
Model Number	B Jacket Dia.	C Vent Size	D Floor to T&P Conn.	E Floor to Gas Conn.	F Floor to Top of Heater	G Floor to Cold Water Conn.	H Depth	J Floor to Hot Water Conn.	M Water Conn. NPT	S Gas Conn. Size	Approx. Shipping Weight
	in.	in.	in.	in.	in.	in.	in.	in.	in.	in.	lbs.
RG2DVMH30T6X	18	3	50 ⁵ / ₁₆	13 ³ / ₈	57	22 ⁷ / ₁₆	21 ⁵ / ₈	57 ¹¹ / ₁₆	¾	½	119
RG2DVMH40T6X	20	3	50 ⁵ / ₁₆	13 ³ / ₈	57 ¹ / ₈	22 ⁷ / ₁₆	23 ³ / ₈	58 ¹⁵ / ₁₆	¾	½	139

Model Number	B Jacket Dia.	C Vent Size	D Floor to T&P Conn.	E Floor to Gas Conn.	F Floor to Top of Heater	G Floor to Cold Water Conn.	H Depth	J Floor to Hot Water Conn.	M Water Conn. NPT	S Gas Conn. Size	Approx. Shipping Weight
	mm.	mm.	mm.	mm.	mm.	mm.	mm.	mm.	mm.	mm.	kg.
RG2DVMH30T6X	457	76	1278	340	1448	570	549	1465	19	13	54
RG2DVMH40T6X	508	76	1278	340	1451	570	600	1497	19	13	63

To order Natural Gas heaters change "X" to "N". For 10 year models, change suffix from "6" to "10".

* Based on manufacturer's rated recovery efficiency.

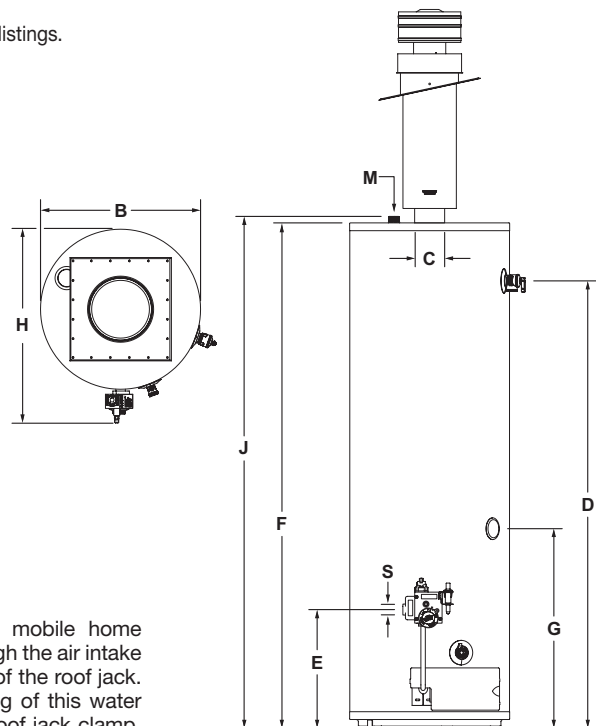
Uniform Energy Factor and First Hour Rating is based on the latest AHRI directory listings.



Optional Roof Jack Kits

Part Number	A	B	Through The Roof Clearance
239-37022-01	15"	16"-33"	12"
239-37022-02	33 ¹ / ₂ "	33 ¹ / ₂ "-66"	18" / 32"
239-37022-03	32 ¹ / ₂ "-62 ¹ / ₂ "	37 ¹ / ₂ "-74"	32" / 60"
239-37022-04	50"-98 ¹ / ₂ "	54 ¹ / ₂ "-109 ¹ / ₂ "	48" / 90"

(Includes: roof jack, hardware, air intake, instructions).



This water heater is of the closed combustion type (direct venting) for mobile home applications only, where all combustion air is supplied from the outdoors through the air intake and all combusted gas products are vented directly to the outside by means of the roof jack. No draft diverter (vent hood) is required for this water heater. The UL® listing of this water heater includes the field installation of the following components: roof jack, roof jack clamp, air intake, air intake seal, and heater tie down materials. These components for field installation are shipped with the heater in a separate box and must be installed according to instructions. No other components are approved for use with the water heater. The water heater must be installed in accordance with The Federal Mobile Home Construction and Safety Standard or in the absence of such standard, The Standard for Mobile Homes (ANSI/NFPA No. 601B-1977)

General:

Meets NAECA Requirements.

All gas water heaters are certified at 300 PSI (2068 kPa) test pressure and 150 PSI (1034 kPa) working pressure. All water connections are 3/4" NPT (19mm), all gas connections are 1/2" (13mm). All models design-certified by UL® to UL® 307-B code and peak performance rated. Designed in accordance with the H.U.D. Manufactured Home Construction and Safety Standard, Title 24 CFR, Part 3280.707 (d)(2) for energy efficiency.

Dimensions and specifications subject to change without notice in accordance with our policy of continuous product improvement.

Suitable for Water (Potable) Heating and Space Heating. Toxic chemicals, such as those used for boiler treatment, shall NEVER be introduced into this system. This unit may NEVER be connected to any existing heating system or component(s) previously used with a non-potable water heating appliance.

— BRADFORD WHITE IS —

**AMERICAN
STRONG**

Sales: 800-523-2931 ■ Fax 215-641-1612

24/7 Technical Support: 800-334-3393 ■ Email techserv@bradfordwhite.com

Products made by Bradford White are manufactured in the United States using the finest raw materials and components from around the world.

Built to be the Best®