



RESIDENTIAL GAS REPLACEMENT PARTS LIST

Manufactured Home Atmospheric Vent “RG2MH” Models



Models Covered:
RG2MH30T
RG2MH40T
*Denotes warranty year

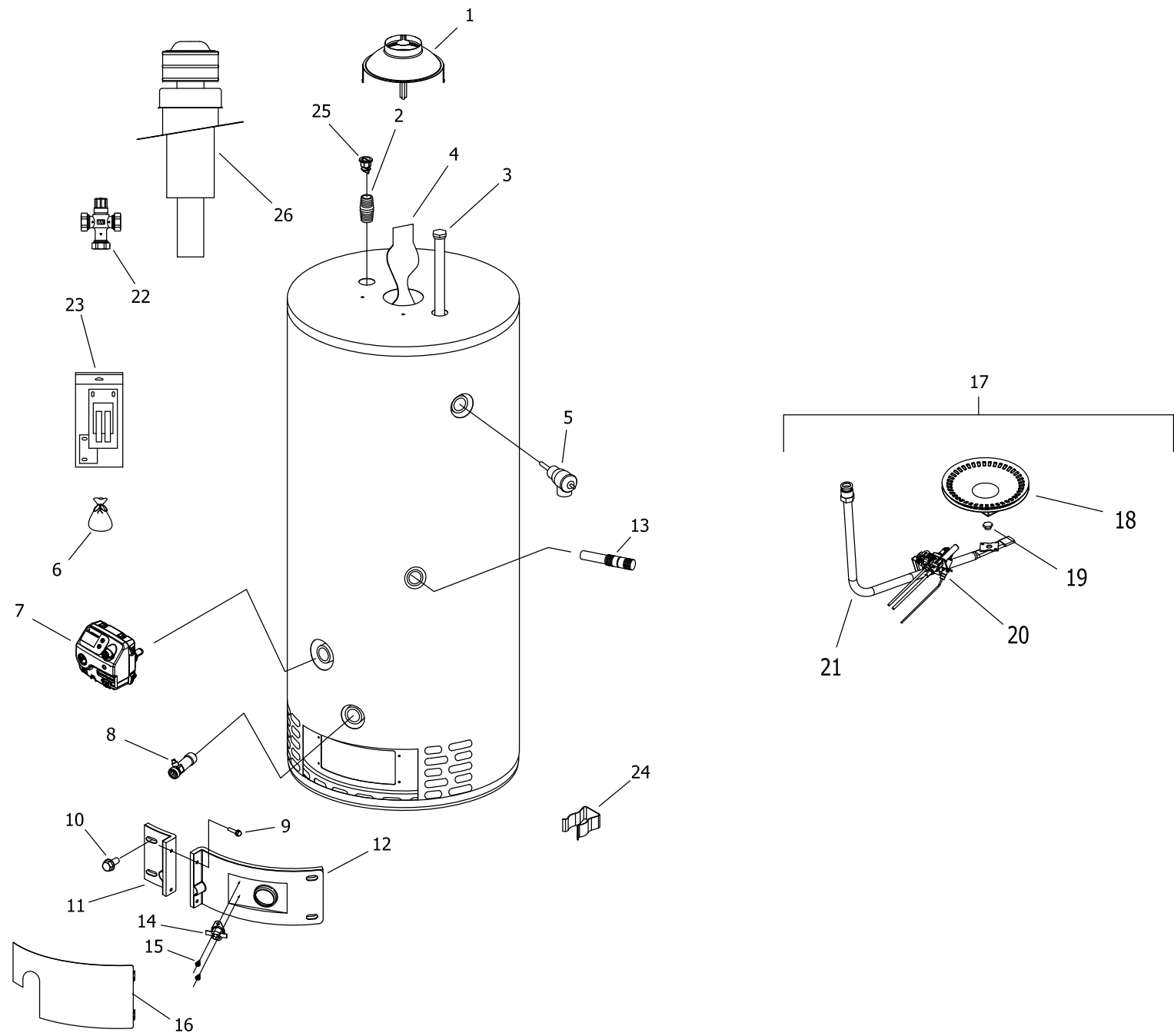
Effective: October, 2024
ECO 8780

**NOTE: BOTH MODEL AND SERIAL
NUMBERS ARE REQUIRED FOR
ORDERING REPLACEMENT PARTS**

Dimensions and specifications
subject to change without notice.



As required by the state of California Proposition 65.



Item	Description	Model	Model
		RG2MH30T	RG2MH40T
1	Draft Diverter	239-45787-00	239-45787-00
2	Nipple 3/4 NPT x 3 ▲	415-50053-03	415-50053-03
3	Hex Anode 3/4 NPT (Magnesium) #	415-55483-00	415-55483-00
	Hex Anode 3/4 NPT (Aluminum) #	415-55485-00	415-55485-00
	Hex Anode 3/4 NPT (A420 Aluminum) #	415-55487-00	415-55487-00
4	Flue Baffle	243-46764-00	243-52582-00
5	T&P Valve	415-40594-02	415-40594-02
6	L.P. Gas Conversion Kit 0 Ft. to 2,000 Ft.	243-54475-03	243-54475-04
	L.P. Gas Conversion Kit 2,001 Ft. to 7,000 Ft. (-475 model suffixes) **	243-54476-03	243-54476-04
	Nat. Gas Conversion Kit 0 Ft. to 2,000 Ft.	243-54475-01	243-54475-02
	Nat Gas Conversion Kit 2,001 Ft. to 7,000 Ft. (-475 model suffixes) **	243-54476-01	243-54476-02
7	L.P. & Nat. Gas Thermostat (Resideo)***	415-53666-01	415-53666-01
8	Brass Drain Valve	415-42351-02	415-42351-02
9	Screw-#8-15 x 3/4 HWH	239-44195-00	239-44195-00
10	Screw-#10-12 x 3/4 HWH SERR	239-52581-00	239-52581-00
11	Left Side Inner Door Complete	239-43968-14	239-43968-16
12	Right Side Inner Door Complete	239-43963-14	239-43963-03
13	Inlet Diptube 3/4 NPT X 3 X 7 1/4 (closed end)	229-38647-14	229-38647-14
14	Resettable Thermal Switch	415-43676-01	415-43676-01
15	Screw-#6-20 x 3/8 PHCR	239-43967-00	239-43967-00
16	Outer Door	243-43962-00	243-43962-00
17	Nat. Gas Burner Assembly Complete***	265-54477-01-38	265-54477-02-36
	LP Gas Burner Assembly Complete***	265-54477-03-1/16	265-54477-04-52
18	Gas LN Burner**	228-41174-00	228-41174-00
19	Nat. Gas Main Burner Orifice 0 Ft. to 2,000 Ft.**	234-37171-38	234-37171-36
	Nat. Gas High Altitude 2,001 Ft. to 7,000 Ft. (-475 model suffixes) **	234-37171-42	234-37171-41
	Nat. Gas High Altitude Kit 7,001 Ft. to 10,000 Ft.	265-51394-03	265-51394-01
	LP Gas Main Burner Orifice 0 Ft. to 2,000 Ft.**	234-37171-1/16	234-37171-52
	LP Gas High Altitude 2,001 Ft. to 7,000 Ft. (-475 model suffixes) **	234-37171-54	234-37171-53
20	LP Gas High Altitude Kit 7,001 Ft. to 10,000 Ft.	265-51394-03	265-51394-01
	Nat. Gas Pilot Assembly**	415-51586-02	415-51586-02
	LP Gas Pilot Assembly**	415-47846-02	415-47846-02
21	Gas Feedline**	233-46801-02	233-46801-03
22	ASSE Approved Mixing Valve (Optional)	239-51778-00	239-51778-00
23	Inner Door Gasket Kit	239-44078-00	239-44078-00
24	Feedline Clip	239-47475-00	239-47475-00
25	Heat Trap Insert (Outlet)	415-45167-00	415-45167-00
26	Roof Jack 12" (Fixed)	415-37030-01	415-37030-01
	Roof Jack 18-32" (Adjustable)	415-37030-02	415-37030-02
	Roof Jack 32-60" (Adjustable)	415-37030-03	415-37030-03
	Roof Jack 48-95" (Adjustable)	415-37030-04	415-37030-04
	-	Earthquake Strap	243-51620-00

* Applies to all warranties.

** Inner door gasket kit recommended.

*** Ordering a complete burner assembly may increase delivery time. Please order the specific component required for the quickest delivery.

▲ Order with item 26.

Anode may need to be cut to length, see page 4.



United States

Sales 1-800-523-2931
Technical Support 1-800-334-3393
Email techsupport@bradfordwhite.com
Warranty 1-800-531-2111
Email warranty@bradfordwhite.com
Service Parts 1-800-538-2020
Email parts@bradfordwhite.com

Canada

Sales 1-866-690-0961 1-905-203-0600
Fax 905-636-0666
Warranty 1-800-531-2111
Email warranty@bradfordwhite.com
Technical Support 1-800-334-3393
Email techsupport@bradfordwhite.com
Service Parts and Orders ca.orders@bradfordwhite.com

For U.S. and Canada field service, contact your professional installer or local Bradford White sales representative.

International

General Contact international@bradfordwhite.com