



BRADFORD WHITE[®]
W A T E R H E A T E R S

**RESIDENTIAL & LIGHT DUTY COMMERCIAL GAS
REPLACEMENT PARTS LIST
ULTRA LOW Nox Power Direct Vent Models
“UPDX, UPDX2” Series**



Models Covered:
UDH(50,65)T45FR*N
UDH75T50FR*N
UDH1504T*FRN
UDH165T*FRN
UDH175S*FRN

Includes Hydrojet[®] Total
Performance System

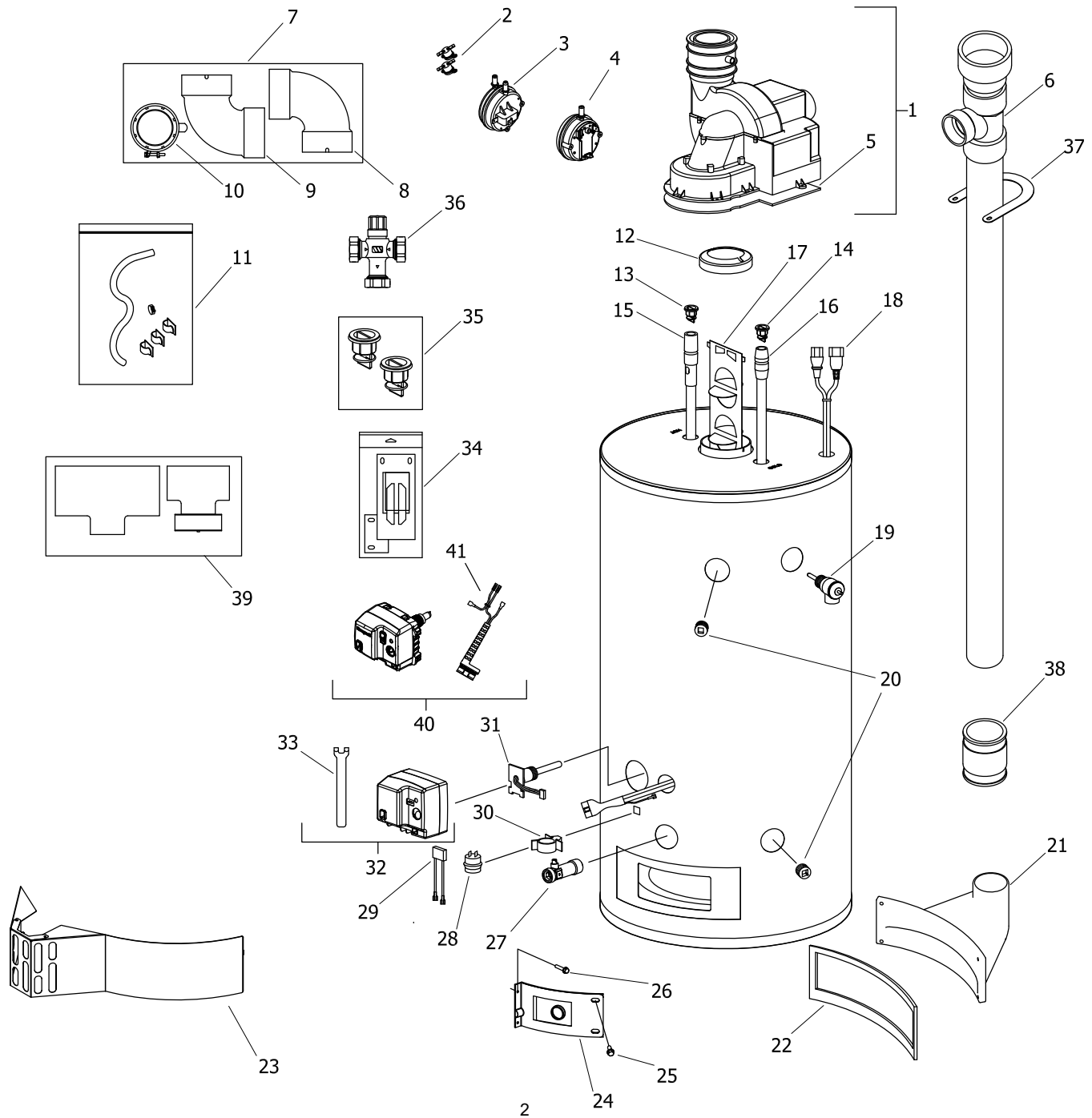
Effective: November, 2024
ECO 8780

**NOTE: BOTH MODEL AND SERIAL
NUMBERS ARE REQUIRED FOR
ORDERING REPLACEMENT PARTS**

Dimensions and specifications
subject to change without notice.

WARNING
CANCER AND REPRODUCTIVE HARM
WWW.P65WARNINGS.CA.GOV

As required by the state of California Proposition 65.



Item	Description	Model	Model	Model
		UPDX250T*FRN	UPDX265T*FRN	UPDX275T*FRN
1	Blower Assembly (Normal Alt.)	415-47387-00	415-47387-00	415-47387-00
	Blower Assembly (High Alt.)	239-48528-00	239-48528-00	239-48528-00
2	Blower Temperature Switch (2 pcs.)	415-45865-00	415-45865-00	415-45865-00
3	Pressure Switch N.O. (Normal Alt.) Exhaust	415-48058-01	415-48058-01	415-48058-01
	Pressure Switch N.O. (High Alt.) Exhaust	415-48058-02	415-48058-02	415-48058-02
4	Pressure Switch N.C. Intake	415-46879-01	415-46879-01	415-46879-01
5	Blower Gasket	239-45866-00	239-45866-00	239-45866-00
6	Tee and vent pipe Assembly	239-47622-01	239-47622-03	239-47622-04
7	Vent Adapter with Vent Terminal	239-48781-00	239-48781-00	239-48781-00
8	Intake Vent Terminal Elbow	415-40579-00	415-40579-00	415-40579-00
9	Exhaust Vent Terminal Elbow	415-40579-00	415-40579-00	415-40579-00
10	Exhaust Adapter	239-45639-00	239-45639-00	239-45639-00
11	Condensate Hose Kit (Optional)	415-45875-00	415-45875-00	415-45875-00
12	Flue Reducer	243-42572-00	243-42572-00	243-42572-00
13	Heat Trap Insert (Outlet)	415-45167-00	415-45167-00	415-45167-00
14	Heat Trap Insert (Inlet)	415-45073-00	415-45073-00	415-45073-00
15	Hot Water Outlet Anode Magnesium#▲	415-55482-00	415-55482-00	415-55482-00
	Aluminum#▲ (optional)	415-55484-00	415-55484-00	415-55484-00
	A420 Aluminum #▲ (optional)	415-55486-00	415-55486-00	415-55486-00
16	Cold Water Inlet Dip Tube Polypropylene▲▲▲	---	---	---
	Cold Water Inlet Dip Tube PEX▲▲▲	415-51230-14	415-51230-08	415-51230-08
17	Flue Baffle	239-45373-00	239-45373-00	239-42899-00
18	Blower Harness	239-45617-02	239-45617-02	239-45617-02
19	T&P Relief Valve	415-40594-02	415-40594-02	415-40594-02
20	3/4 NPT Plug	239-11638-00	239-11638-00	239-11638-00
21	Air Intake Boot	239-47514-18	239-47514-20	239-47514-22
22	Air Intake Boot Gasket	239-47832-00	239-47832-00	239-47832-00
23	Outer Door	239-46209-00	239-46209-00	239-46209-00
24	Right Side Inner Door w/ gasket	239-48216-18	239-48216-20	239-48216-22
25	Screw-#10-12 x 3/4 HWH	239-44113-00	239-44113-00	239-44113-00
26	Screw-#8-15 x 3/4 HWH	239-44195-00	239-44195-00	239-44195-00
27	Brass Drain Valve	415-42351-02	415-42351-02	415-42351-02
28	Flammable Vapor Sensor (2 pcs.)	415-45560-00	415-45560-00	415-45560-00
29	Sensor Harness	239-45620-00	239-45620-00	239-45620-00
30	Flammable Vapor Sensor Clip	239-45648-00	239-45648-00	239-45648-00
31	Thermal Well◆	233-45651-02	233-45651-02	233-45651-02
32	Gas Valve Natural Gas◆	239-48174-01	239-48174-01	239-48174-01
33	Gas Valve Service Tool◆	239-45991-00	239-45991-00	239-45991-00
34	Inner Door Gasket Kit	239-49597-00	239-49597-00	239-49597-00
35	Heat Trap Insert Kit	265-45419-00	265-45419-00	265-45419-00
36	ASSE Approved Mixing Valve (Optional)	239-51778-00	239-51778-00	239-51778-00
37	Bracket-Vertical intake	239-47671-01	239-47671-01	239-47671-01
38	Coupling-2 X 2	239-47850-00	239-47850-00	239-47850-00
39	Air Inlet Relief Device	239-48391-00	239-48391-00	239-48392-00
40	Gas Valve Natural Gas◆◆	415-49823-02	415-49823-02	415-49823-02
41	FV Sensor and Thermal Switch Harness◆◆	239-50066-00	239-50066-00	239-50066-00

*Applies to all warranties

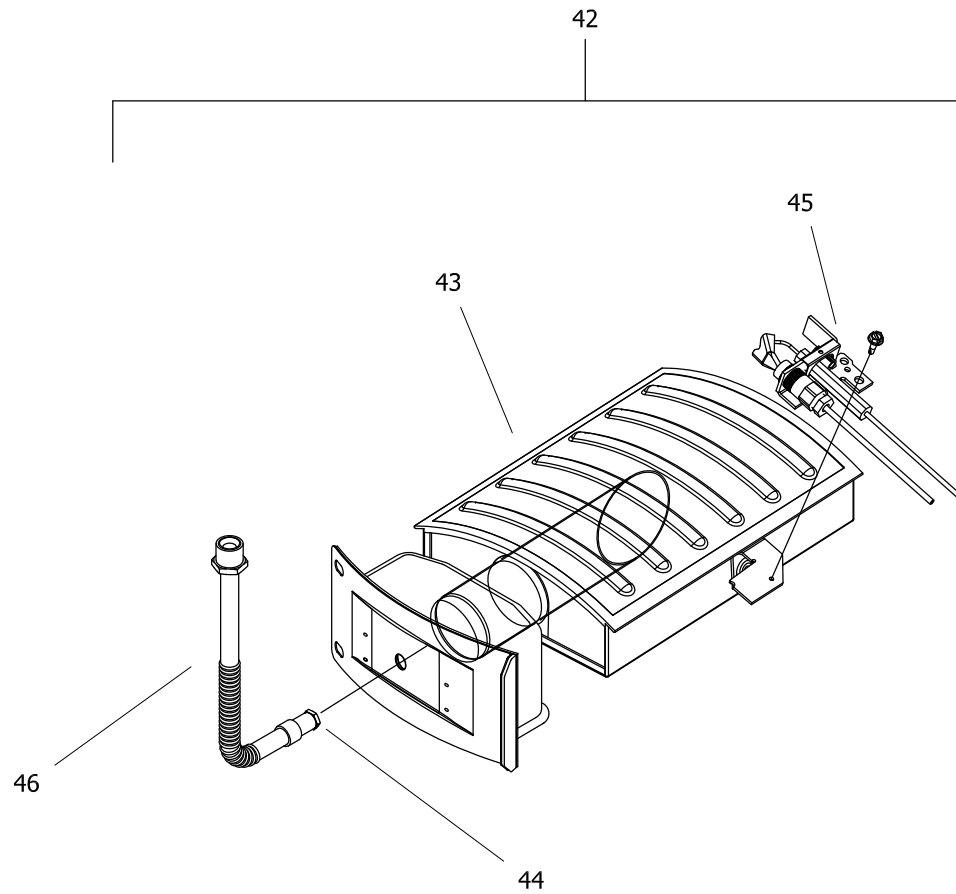
Anode may need to be cut to length

▲ Order with item 13

▲▲ Order with item 14

◆ For serial numbers beginning with "J" or earlier

◆◆ For serial numbers beginning with "K" or later



NATURAL GAS (BN) BURNER ASSEMBLY

Item Description	Model UPDX250T*FRN	Model UPDX265T*FRN	Model UPDX275T*FRN
Natural Gas BN Burner Assembly			
42 Nat. Gas Burner Assembly Complete***	265-48801-03-33	265-48801-04-31	265-48801-05-31
43 Nat. Gas (BN) Burner**	228-48691-19	228-48691-21	228-48691-22
44 Nat. Gas (BN) Main Burner Orifice**	234-18194-33	234-18194-31	234-18194-31
Nat. Gas (BN)High Altitude 2001 Ft. to 5000 Ft.**	234-18194-36	234-18194-33	234-18194-33
Nat. Gas (BN)High Altitude 5001 Ft. to 8000 Ft.**	234-18194-37	234-18194-36	234-18194-36
45 Nat. Gas Pilot Assembly**	233-48175-02	233-48175-04	233-48175-04
46 Nat. Gas Universal Feedline**	233-49398-02	233-49398-02	233-49398-02

Item	Description	Model
		UPDX50S50FR*N
1	Blower Assembly (Normal Alt.)	415-47387-00
	Blower Assembly (High Alt.)	239-48528-00
2	Blower Temperature Switch (2 pcs.)	415-45865-00
3	Pressure Switch N.O. (Normal Alt.) Exhaust	415-48058-01
	Pressure Switch N.O. (High Alt.) Exhaust	415-48058-02
4	Pressure Switch N.C. Intake	415-46879-01
5	Blower Gasket	239-45866-00
6	Tee and vent pipe Assembly	239-47622-01
7	Vent Adapter with Vent Terminal	239-48781-00
8	Intake Vent Terminal Elbow	415-40579-00
9	Exhaust Vent Terminal Elbow	415-40579-00
10	Exhaust Adapter	239-45639-00
11	Condensate Hose Kit (Optional)	415-45875-00
12	Flue Reducer	243-42572-00
13	Heat Trap Insert (Outlet)	415-45167-00
14	Heat Trap Insert (Inlet)	415-45073-00
15	Hot Water Outlet Anode Magnesium#▲	415-55482-00
	Aluminum#▲ (optional)	415-55484-00
	A420 Aluminum #▲ (optional)	415-55486-00
16	Cold Water Inlet Dip Tube Polypropylene▲▲	---
	Cold Water Inlet Dip Tube PEX▲▲	415-51230-16
17	Flue Baffle	239-45373-00
18	Blower Harness	239-45617-02
19	T&P Relief Valve	415-40594-02
20	3/4 NPT Plug	239-11638-00
21	Air Intake Boot	239-47514-18
22	Air Intake Boot Gasket	239-47832-00
23	Outer Door	239-46209-00
24	Right Side Inner Door w/ gasket	239-48216-18
25	Screw-#10-12 x 3/4 HWH	239-44113-00
26	Screw-#8-15 x 3/4 HWH	239-44195-00
27	Brass Drain Valve	415-42351-02
28	Flammable Vapor Sensor (2 pcs.)	415-45560-00
29	Sensor Harness	239-45620-00
30	Flammable Vapor Sensor Clip	239-45648-00
31	Thermal Well♦	233-45651-02
32	Gas Valve Natural Gas♦	239-48174-02
33	Gas Valve Service Tool♦	239-45991-00
34	Inner Door Gasket Kit	239-49597-00
35	Heat Trap Insert Kit	265-45419-00
36	ASSE Approved Mixing Valve (Optional)	239-51778-00
37	Bracket-Vertical intake	239-47671-01
38	Coupling-2 X 2	239-47850-00
39	Air Inlet Relief Device	239-48392-00
40	Gas Valve Natural Gas♦♦	415-49823-04
41	FV Sensor and Thermal Switch Harness♦♦	239-50066-00

*Applies to all warranties

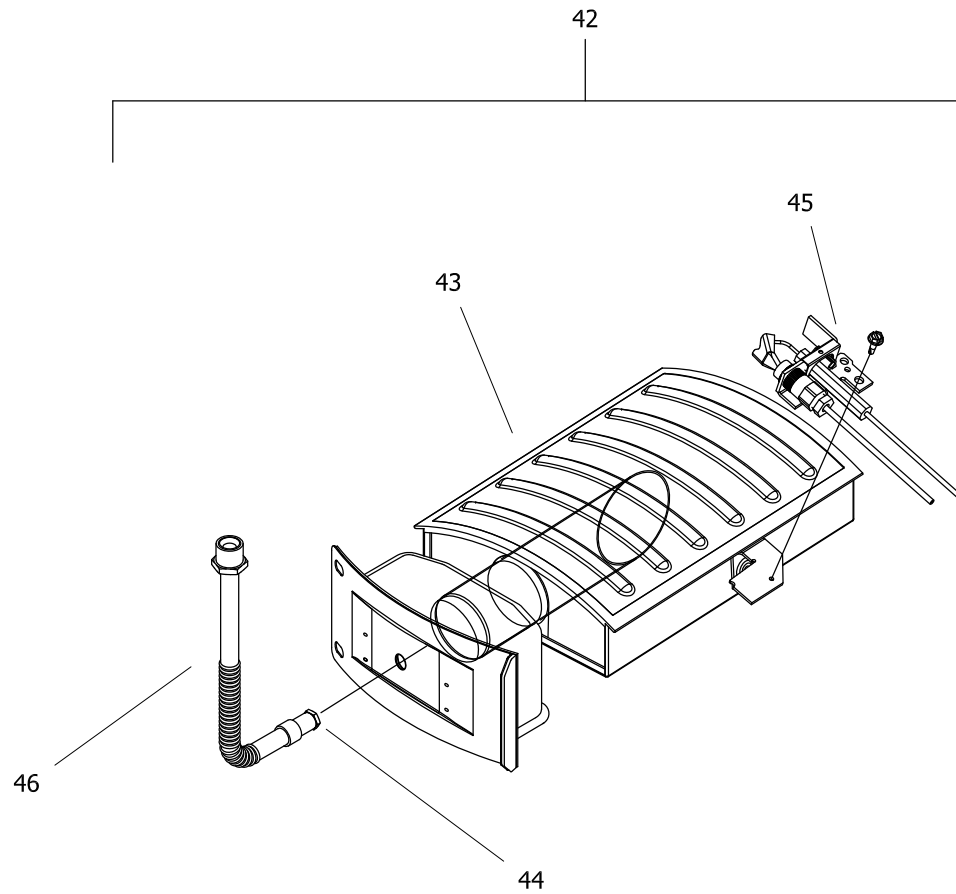
Anode may need to be cut to length

▲ Order with item 13

▲▲ Order with item 14

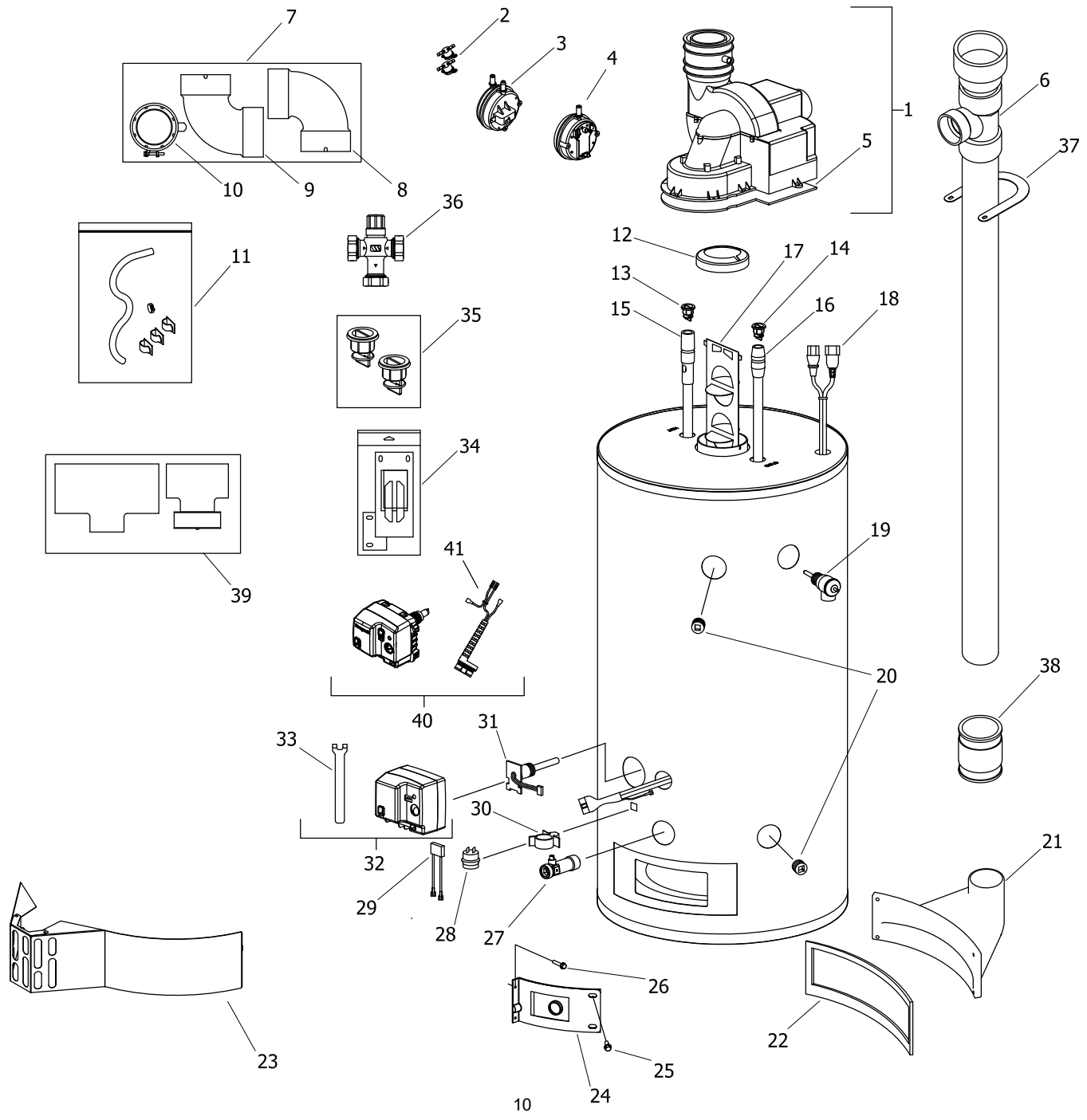
♦ For serial numbers beginning with "J" or earlier

♦♦ For serial numbers beginning with "K" or later



NATURAL GAS (BN) BURNER ASSEMBLY

Item Description	Model
Natural Gas BN Burner Assembly	
42 Nat. Gas Burner Assembly Complete***	265-48801-03-33
43 Nat. Gas (BN) Burner**	228-48691-19
44 Nat. Gas (BN) Main Burner Orifice**	234-18194-33
Nat. Gas (BN)High Altitude 2001 Ft. to 5000 Ft.**	234-18194-36
Nat. Gas (BN)High Altitude 5001 Ft. to 8000 Ft.**	234-18194-38
45 Nat. Gas Pilot Assembly**	233-48175-02
46 Nat. Gas Universal Feedline**	233-49398-02



Item	Description	Model	Model
		UPDX65S55FR*N	UPDX75S55FR*N
1	Blower Assembly (Normal Alt.)	415-47387-00	415-47387-00
	Blower Assembly (High Alt.)	239-48528-00	239-48528-00
2	Blower Temperature Switch (2 pcs.)	415-45865-00	415-45865-00
3	Pressure Switch N.O. (Normal Alt.) Exhaust	415-48058-01	415-48058-01
	Pressure Switch N.O. (High Alt.) Exhaust	415-48058-02	415-48058-02
4	Pressure Switch N.C. Intake	415-46879-01	415-46879-01
5	Blower Gasket	239-45866-00	239-45866-00
6	Tee and vent pipe Assembly	239-47622-03	239-47622-04
7	Vent Adapter with Vent Terminal	239-48781-00	239-48781-00
8	Intake Vent Terminal Elbow	415-40579-00	415-40579-00
9	Exhaust Vent Terminal Elbow	415-40579-00	415-40579-00
10	Exhaust Adapter	239-45639-00	239-45639-00
11	Condensate Hose Kit (Optional)	415-45875-00	415-45875-00
12	Flue Reducer	243-42572-00	---
13	Heat Trap Insert (Outlet)	415-45167-00	415-45167-00
14	Heat Trap Insert (Inlet)	415-45073-00	415-45073-00
15	Hot Water Outlet Anode Magnesium#▲	415-55482-00	415-55482-00
	Aluminum#▲ (optional)	415-55484-00	415-55484-00
	A420 Aluminum #▲ (optional)	415-55486-00	415-55486-00
16	Cold Water Inlet Dip Tube Polypropylene▲▲	415-45398-02	229-45398-07
	Cold Water Inlet Dip Tube PEX▲▲	415-51230-06	415-51230-08
17	Flue Baffle	239-45373-00	239-42899-00
18	Blower Harness	239-45617-02	239-45617-02
19	T&P Relief Valve	415-40594-02	415-40594-02
20	3/4 NPT Plug	239-11638-00	239-11638-00
21	Air Intake Boot	239-47514-20	239-47514-22
22	Air Intake Boot Gasket	239-47832-00	239-47832-00
23	Outer Door	239-46209-00	239-46209-00
24	Right Side Inner Door w/ gasket	239-48216-20	239-48216-22
25	Screw-#10-12 x 3/4 HWH	239-44113-00	239-44113-00
26	Screw-#8-15 x 3/4 HWH	239-44195-00	239-44195-00
27	Brass Drain Valve	415-42351-02	415-42351-02
28	Flammable Vapor Sensor (2 pcs.)	415-45560-00	415-45560-00
29	Sensor Harness	239-45620-00	239-45620-00
30	Flammable Vapor Sensor Clip	239-45648-00	239-45648-00
31	Thermal Well◆	233-45651-02	233-45651-02
32	Gas Valve Natural Gas◆	239-48174-02	239-48174-02
33	Gas Valve Service Tool◆	239-45991-00	239-45991-00
34	Inner Door Gasket Kit	239-49597-00	239-49597-00
35	Heat Trap Insert Kit	265-45419-00	265-45419-00
36	ASSE Approved Mixing Valve (Optional)	239-51778-00	239-51778-00
37	Bracket-Vertical intake	239-47671-01	239-47671-01
38	Coupling-2 X 2	239-47850-00	239-47850-00
39	Air Inlet Relief Device	239-48392-00	239-48392-00
40	Gas Valve Natural Gas◆◆	415-49823-04	415-49823-04
41	FV Sensor and Thermal Switch Harness◆◆	239-50066-00	239-50066-00

*Applies to all warranties

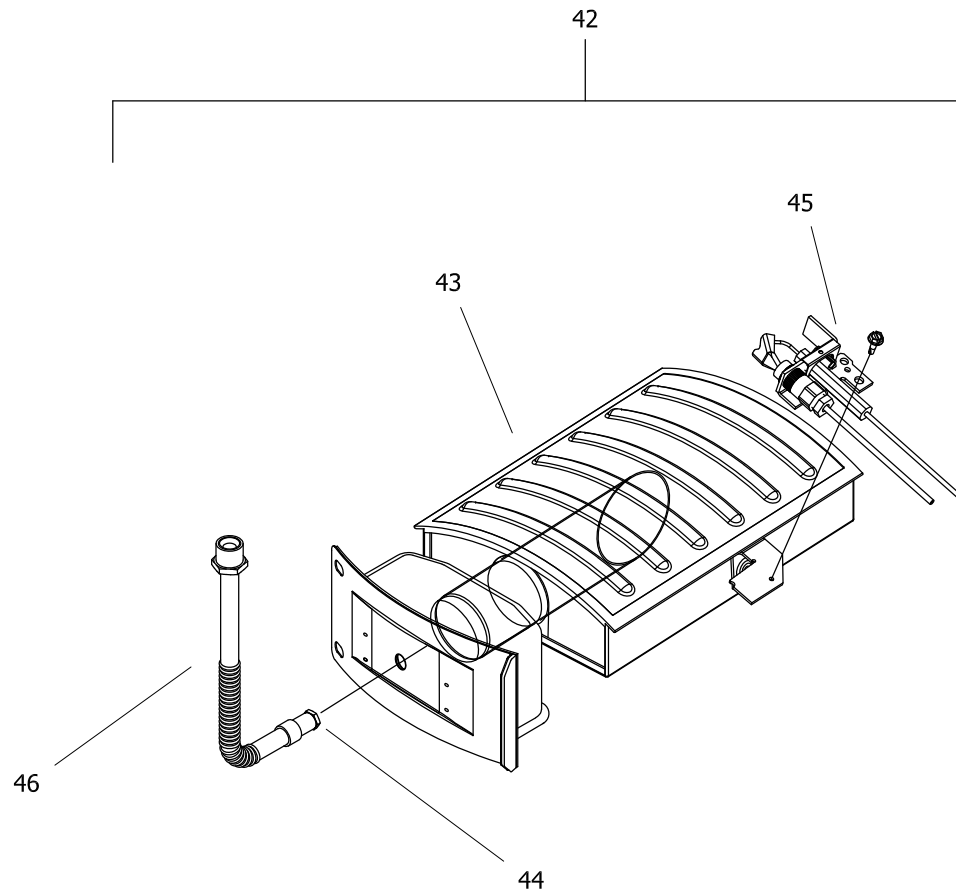
Anode may need to be cut to length

▲ Order with item 13

▲▲ Order with item 14

◆ For serial numbers beginning with "J" or earlier

◆◆ For serial numbers beginning with "K" or later



NATURAL GAS (BN) BURNER ASSEMBLY

Item Description	Model UPDX65S55FR*N	Model UPDX75S55FR*N
Natural Gas BN Burner Assembly		
42 Nat. Gas Burner Assembly Complete***	265-48801-04-31	265-48801-05-31
43 Nat. Gas (BN) Burner**	228-48691-21	228-48691-22
44 Nat. Gas (BN) Main Burner Orifice**	234-18194-31	234-18194-31
Nat. Gas (BN)High Altitude 2001 Ft. to 5000 Ft.**	234-18194-33	234-18194-33
Nat. Gas (BN)High Altitude 5001 Ft. to 8000 Ft.**	234-18194-36	234-18194-36
45 Nat. Gas Pilot Assembly**	233-48175-04	233-48175-04
46 Nat. Gas Universal Feedline**	233-49398-02	239-49006-02



United States

Sales 1-800-523-2931
Technical Support 1-800-334-3393
Email techsupport@bradfordwhite.com
Warranty 1-800-531-2111
Email warranty@bradfordwhite.com
Service Parts 1-800-538-2020
Email parts@bradfordwhite.com

Canada

Sales 1-866-690-0961 1-905-203-0600
Fax 905-636-0666
Warranty 1-800-531-2111
Email warranty@bradfordwhite.com
Technical Support 1-800-334-3393
Email techsupport@bradfordwhite.com
Service Parts and Orders ca.orders@bradfordwhite.com

For U.S. and Canada field service, contact your professional installer or local Bradford White sales representative.

International

General Contact international@bradfordwhite.com