



BRADFORD WHITE[®]
W A T E R H E A T E R S

**LIGHT DUTY COMMERCIAL ELECTRIC REPLACEMENT
PARTS LIST**

Light Duty Energy Saver Models



Models Covered:
LD(30,40,50,65,80)R
LD(20,30,40,50,120)L

Includes Hydrojet[®]
Total Performance System

Effective: October, 2024
ECO 8780

**NOTE: BOTH MODEL AND SERIAL
NUMBERS ARE REQUIRED FOR
ORDERING REPLACEMENT PARTS**

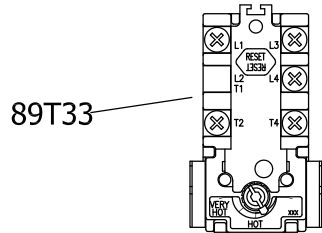
Dimensions and specifications
subject to change without notice.

WARNING
CANCER AND REPRODUCTIVE HARM
WWW.P65WARNINGS.CA.GOV

As required by the state of California Proposition 65.

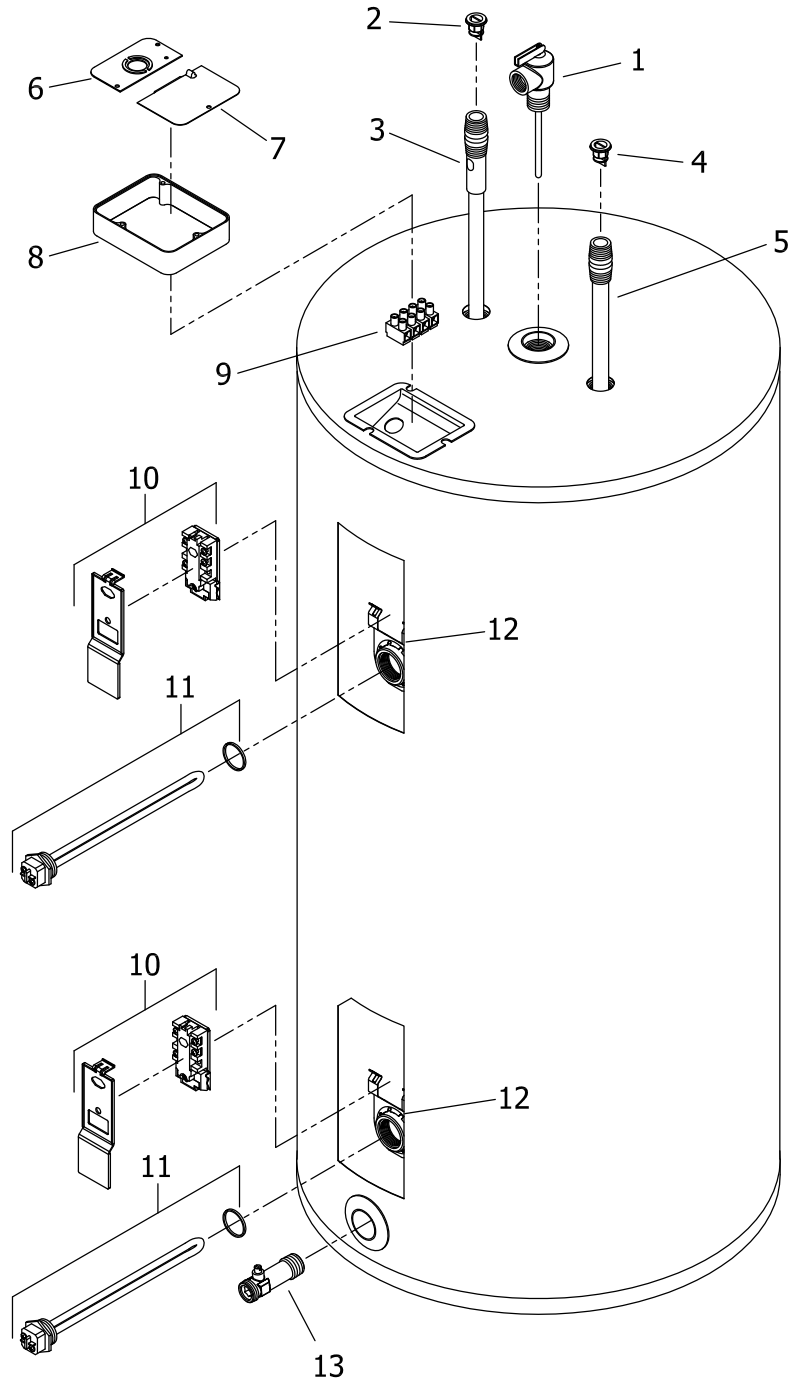
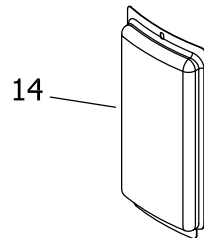
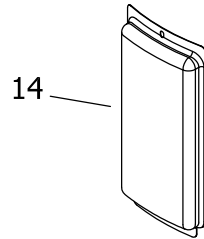
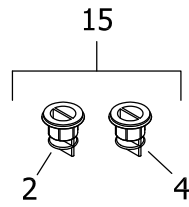
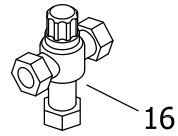
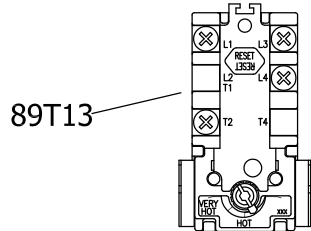
TOP LOCATION

- Double element water heater.



BOTTOM LOCATION

- Single element water heater.
- Double element water heater.



Item	Description	Model LD30R	Model LD40S	Model LD50S	Model LD65R	Model LD80R
1	T&P Relief Valve	415-40594-02	415-32920-01	415-32920-01	415-32920-01	415-32920-01
2	Heat Trap Insert (Outlet)	415-45167-00	415-45167-00	415-45167-00	415-45167-00	415-45167-00
3	Hot Water Outlet Anode Magnesium ♦#	415-55482-00	415-55482-00	415-55482-00	415-55482-00	415-55482-00
	Aluminum ♦#	415-55484-00	415-55484-00	415-55484-00	415-55484-00	415-55484-00
	A420 (Aluminum)#	415-55486-00	415-55486-00	415-55486-00	415-55486-00	415-55486-00
4	Heat Trap Insert (Inlet)	415-45073-00	415-45073-00	415-45073-00	415-45073-00	415-45073-00
5	Cold Water Inlet Tube Polypropylene ♦♦	415-51230-21	229-51230-08	229-51230-08	415-51230-10	415-51230-10
6	Cover Conduit/Ground	243-39451-00	243-39451-00	243-39451-00	243-39451-00	243-39451-00
7	Cover Junction box	243-39452-00	243-39452-00	243-39452-00	243-39452-00	243-39452-00
8	Junction Box Extender	239-40587-00	239-40587-00	239-40587-00	239-40587-00	239-40587-00
9	Terminal Block (4 pole)	239-47294-00	239-47294-00	239-47294-00	239-47294-00	239-47294-00
10	Upper Thermostat with High Limit (59T66) & Protector ▲	415-50691-00	415-50691-00	415-50691-00	415-50691-00	415-50691-00
	Lower Thermostat with High Limit (59T66) & Protector ▲■	415-51046-00	415-51046-00	415-51046-00	415-51046-00	415-51046-00
11	Heating Element 240V 4500 with gasket*	415-48642-00	415-48642-00	415-48642-00	415-48642-00	415-48642-00
12	Thermostat Mounting Bracket	239-50689-00	239-50689-00	239-50689-00	239-50689-00	239-50689-00
13	Brass Drain Valve	415-42351-02	415-42351-02	415-42351-02	415-42351-02	415-42351-02
14	Access Cover	243-36618-02	243-36618-02	243-36618-02	243-36618-02	243-36618-02
15	Kit-Heat Trap Insert	265-45420-00	265-45420-00	265-45420-00	265-45420-00	265-45420-00
16	ASSE Approved Mixing Valve	239-51778-00	239-51778-00	239-51778-00	239-51778-00	239-51778-00

♦ Order with item 2.

♦♦ Order with item 4.

▲ Thermostat protector provided with thermostat.

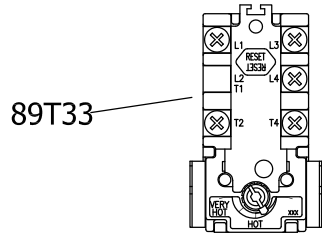
* For other voltage and wattage combinations, refer to heating element on pages 6 & 7.

■ These parts are packaged together.

Anode may need to be cut to length

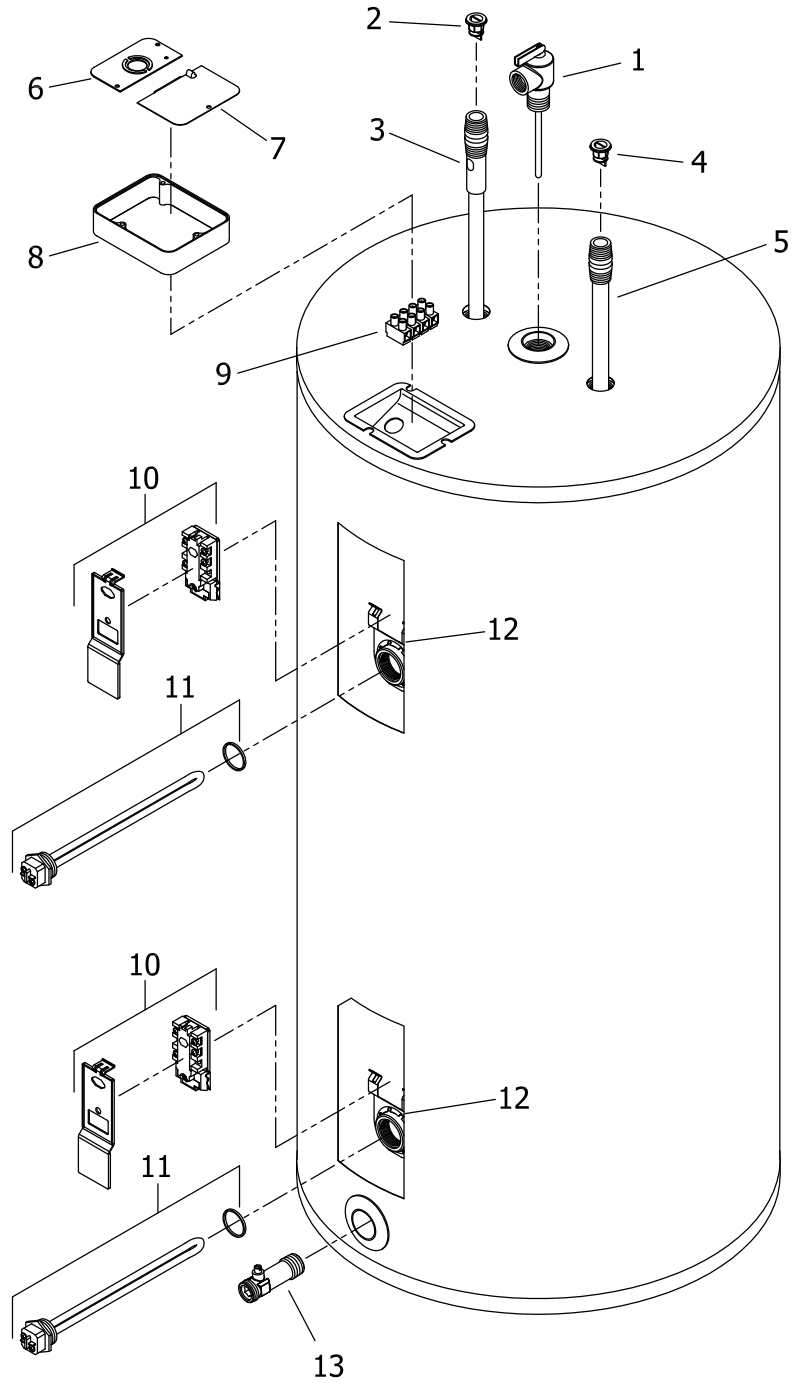
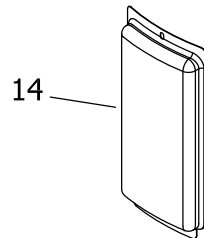
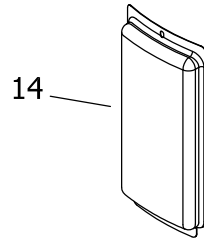
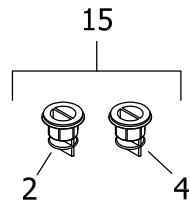
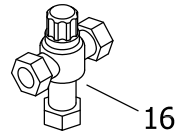
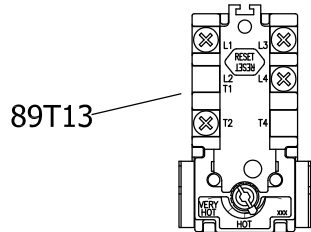
TOP LOCATION

- Double element water heater.



BOTTOM LOCATION

- Single element water heater.
- Double element water heater.



Item	Description	Model LD120R	Model LD20L	Model LD30L	Model LD40L	Model LD50L
1	T&P Relief Valve	415-40594-02	415-32920-01	415-40594-02	415-40594-02	415-40594-02
2	Heat Trap Insert (Outlet)	415-45167-00	415-45167-00	415-45167-00	415-45167-00	415-45167-00
3	Hot Water Outlet Anode Magnesium ♦#	415-47780-01	415-55482-00	415-55482-00	415-55482-00	415-55482-00
	Aluminum ♦#	415-45036-01	415-55484-00	415-55484-00	415-55484-00	415-55484-00
	A420(Aluminum)#	224-49561-01	415-55486-00	415-55486-00	415-55486-00	415-55486-00
4	Heat Trap Insert (Inlet)	415-45073-00	415-45073-00	415-45073-00	415-45073-00	415-45073-00
5	Cold Water Inlet Tube Polypropylene ♦♦	415-45031-01	415-51230-01	229-51718-04	415-51230-27	415-51230-27
6	Cover Conduit/Ground	243-39451-00	243-39451-00	243-39451-00	243-39451-00	243-39451-00
7	Cover Junction box	243-39452-00	243-39452-00	243-39452-00	243-39452-00	243-39452-00
8	Junction Box Extender	239-40587-00	239-40587-00	239-40587-00	239-40587-00	239-40587-00
9	Terminal Block (4 pole)	239-47294-00	239-47294-00	239-47294-00	239-47294-00	239-47294-00
10	Upper Thermostat with High Limit (59T66) & Protector ▲	415-50691-00	415-50691-00	415-50691-00	415-50691-00	415-50691-00
	Lower Thermostat with High Limit (59T66) & Protector ▲■	415-51046-00	415-51046-00	415-51046-00	415-51046-00	415-51046-00
11	Heating Element 240V 4500 with gasket*	415-48642-00	415-48642-00	415-48642-00	415-48642-00	415-48642-00
12	Thermostat Mounting Bracket	239-50689-00	239-50689-00	239-50689-00	239-50689-00	239-50689-00
13	Brass Drain Valve	415-42351-02	415-42351-02	415-42351-02	415-42351-02	415-42351-02
14	Access Cover	243-36618-02	243-36618-02	243-36618-02	243-36618-02	243-36618-02
15	Kit-Heat Trap Insert	265-45420-00	265-45420-00	265-45420-00	265-45420-00	265-45420-00
16	ASSE Approved Mixing Valve	239-51778-00	239-51778-00	239-51778-00	239-51778-00	239-51778-00

♦ Order with item 2.

♦♦ Order with item 4.

▲ Thermostat protector provided with thermostat.

* For other voltage and wattage combinations, refer to heating elements on page 6 & 7.

■ These parts are packaged together.

Anode may need to be cut to length

Voltage & Wattage Conversion Kits

Element Wattage	Non-Simultaneous	Simultaneous Max Wattage	Voltage			
			120	208	240	277
1500	1500	3000	415-46409-01	415-46409-05	415-46409-13	265-45409-16
2000	2000	4000	265-46409-02 *	415-46409-06	415-46409-05	265-45409-17
2500	2500	5000	265-46409-03 *	415-46409-07	415-46409-06	265-45409-18
3000	3000	6000	265-46409-04 *	415-46409-08	415-46409-14	265-45409-19
3500	3500	7000	N/A	415-46409-09	415-46409-07	N/A
4000	4000	8000	N/A	265-46409-10	415-46409-08	265-45409-20
4500	4500	9000	N/A	415-46409-11	415-46409-09	265-45409-21
5000	5000	10000	N/A	265-46409-12	415-46409-15	265-45409-22
5500	5500	11000	N/A	265-46409-46 *	265-46409-10	265-46409-40
6000	6000	12000	N/A	265-46409-47 *	265-46409-48 *	265-45409-23

			380	415	480
1500	1500	3000	415-46409-24	415-46409-41	415-46409-32
2000	2000	4000	415-46409-43	415-46409-24	415-46409-33
2500	2500	5000	415-46409-25	415-46409-43	415-46409-34
3000	3000	6000	415-46409-26	415-46409-25	415-46409-35
3500	3500	7000	265-46409-27	415-46409-26	N/A
4000	4000	8000	265-46409-29	265-46409-27	415-46409-36
4500	4500	9000	265-46409-30	265-46409-28	265-46409-37
5000	5000	10000	265-46409-31	265-46409-29	415-46409-38
5500	5500	11000	265-46409-44	265-46409-30	265-46409-42
6000	6000	12000	265-46409-45	265-46409-31	265-46409-39

* These kits contain only one element for single element water heaters only.

**Heating Elements (Copper) for:
Residential Series
Light Duty (LD) Commercial Series
Medium Duty (E32) Commercial Series
Commercial (MII) Series**

Wattage	120 Volt	208 Volt	240 Volt	277 Volt	380 Volt	415 Volt	480 Volt
1000W ▲	220-42540-01	220-42544-01	220-42546-01	N/A	N/A	N/A	N/A
1250W ▲	N/A	N/A	220-42544-13	N/A	N/A	N/A	N/A
1500W ▲	220-42540-02	220-42544-03	220-42544-01	N/A	N/A	N/A	N/A
1500W (LWD) ▲	220-42540-03	N/A	220-42544-02	N/A	N/A	N/A	N/A
2000W ▲	220-42540-04	220-42544-04	220-42544-03	N/A	N/A	N/A	N/A
2500W ▲	220-42540-05	220-42544-06	220-42544-04	N/A	N/A	N/A	N/A
3000W ▲	220-42540-07	220-42544-14	220-42544-05	N/A	N/A	N/A	N/A
3500W ▲▲	N/A	220-51333-08	220-42544-06	N/A	N/A	N/A	N/A
3800W ▲▲	N/A	N/A	220-42546-07	N/A	N/A	N/A	N/A
4000W ▲▲	N/A	220-42544-11	220-42544-14	N/A	N/A	N/A	N/A
4500W ▲▲	N/A	220-42544-12	220-51333-08	N/A	N/A	N/A	N/A
4500W (LWD) ▲▲	N/A	N/A	220-51333-09	N/A	N/A	N/A	N/A
5000W ▲▲	N/A	N/A	220-42544-10	N/A	N/A	N/A	N/A
5500W ▲▲	N/A	N/A	220-42544-11	N/A	N/A	N/A	N/A
6000W ▲▲	N/A	N/A	220-42544-12	N/A	N/A	N/A	N/A
Element gasket ^	223-34019-00	223-34019-00	223-34019-00	N/A	N/A	N/A	N/A
Element plug	223-34020-00	223-34020-00	223-34020-00	N/A	N/A	N/A	N/A

(LWD) = Low Watt Density

For bagged elements that include gasket, change part number prefix to 265- (example: 265-42540-01).

▲ For 12" diameter tanks and above.

▲▲ For 14" diameter tanks and above.

* For 16" diameter tanks and above.

** For 18" diameter tanks and above.

^ Element gaskets should be ordered with elements.

Heating Elements (Incoloy) for:
Residential Series
Light Duty (LD) Commercial Series
Medium Duty (E32) Commercial Series
Commercial (MII) Series

Wattage	120 Volt	208 Volt	240 Volt	277 Volt	380 Volt	415 Volt	480 Volt
1000W ▲	N/A	220-42545-13	220-42547-10	N/A	N/A	N/A	N/A
1250W ▲	N/A	N/A	N/A	N/A	N/A	N/A	N/A
1500W ▲	220-42541-02	220-42545-02	220-42545-13	220-42547-10	220-42551-12	220-42551-11	220-42553-09
1500W (LWD) ▲	N/A	N/A	N/A	N/A	N/A	N/A	N/A
2000W ▲	N/A	220-42545-14	220-42545-02	220-42547-07	220-42549-04	220-42551-12	220-42553-01
2500W ▲	N/A	220-42545-11	220-42545-14	220-42547-11	220-42551-13	220-42549-04	220-42553-10
3000W ▲	N/A	220-42545-12	220-42545-15	220-42547-08	220-42551-10	220-42551-13	220-42553-08
3500W ▲▲	N/A	220-51328-07	220-42545-11	N/A	220-42551-05	220-42551-10	N/A
3800W ▲▲	N/A	N/A	220-42547-09	N/A	N/A	N/A	N/A
4000W ▲▲	N/A	220-42545-09	220-42545-12	220-42547-03	220-42551-07	220-42551-05	220-42553-03
4500W ▲▲	N/A	220-42545-10	220-51328-07	220-42547-04	220-42551-08	220-42551-06	220-42553-04
4500W (LWD) ▲▲	N/A	N/A	N/A	N/A	N/A	N/A	N/A
5000W ▲▲	N/A	220-42543-01	220-42545-08	220-42547-09	220-42551-09	220-42551-07	220-42553-05
5500W ▲▲	N/A	220-42543-02	220-42545-09	220-42547-05	220-42549-03	220-42551-08	220-42553-06
6000W ▲▲	N/A	220-42543-03	220-42545-10	220-42547-06	220-42549-02	220-42551-09	220-42553-07
Element gasket ^	223-34019-00	223-34019-00	223-34019-00	223-34019-00	223-34019-00	223-34019-00	223-34019-00
Element plug	223-34020-00	223-34020-00	223-34020-00	223-34020-00	223-34020-00	223-34020-00	223-34020-00

(LWD) = Low Watt Density

For bagged elements that include gasket, change part number prefix to 265- (example: 265-42541-02).

Element wrench *** 265-35897-12

Adapt-a-flange kit ** 265-36968-12

*** For use with residential, LD, E32, and MII series heating elements only. Not for use with commercial "A" series heating elements.

▲ For 12" diameter tanks and above.

▲▲ For 14" diameter tanks and above.

* For 16" diameter tanks and above.

** For 18" diameter tanks and above.

^ Element gaskets should be ordered with elements.



United States

Sales 1-800-523-2931
Technical Support 1-800-334-3393
Email techsupport@bradfordwhite.com
Warranty 1-800-531-2111
Email warranty@bradfordwhite.com
Service Parts 1-800-538-2020
Email parts@bradfordwhite.com

Canada

Sales 1-866-690-0961 1-905-203-0600
Fax 905-636-0666
Warranty 1-800-531-2111
Email warranty@bradfordwhite.com
Technical Support 1-800-334-3393
Email techsupport@bradfordwhite.com
Service Parts and Orders ca.orders@bradfordwhite.com

For U.S. and Canada field service, contact your professional installer or local Bradford White sales representative.

International

General Contact international@bradfordwhite.com