



LIGHT DUTY COMMERCIAL GAS REPLACEMENT PARTS LIST

Light Duty Through-the-Wall TW4 Models



Models Covered:
TTW450S
TTW465S

Includes Hydrojet Total
Performance System

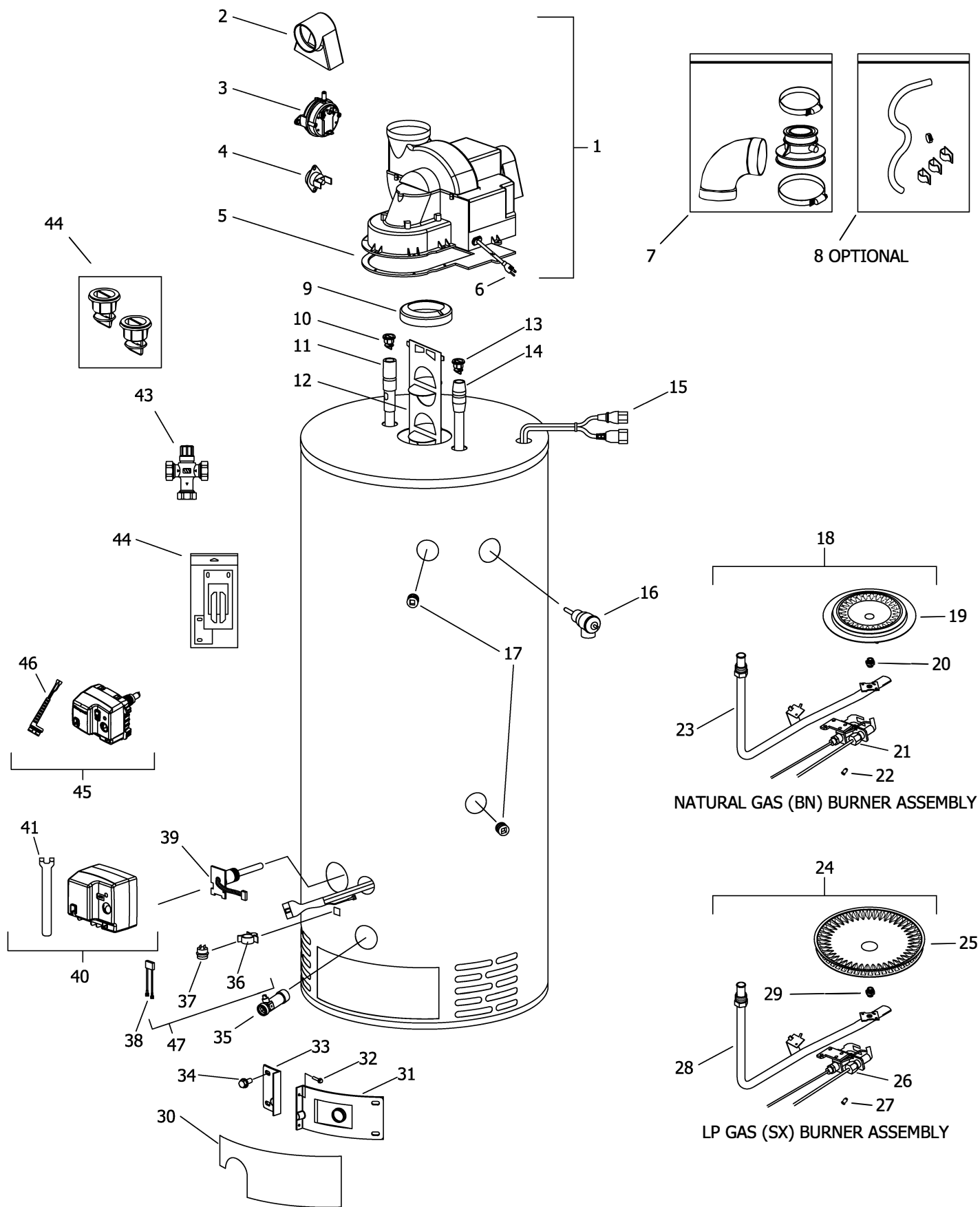
Effective: October, 2024
ECO 8780

**NOTE: BOTH MODEL AND SERIAL
NUMBERS ARE REQUIRED FOR
ORDERING REPLACEMENT PARTS**

Dimensions and specifications
subject to change without notice.



As required by the state of California Proposition 65.



Item Description	Model	Model
	TW450S65F*(BN, CX, SX)	TW465S65F*(BN, CX, SX)
1 Blower Complete	415-45583-00	415-45583-00
High Altitude Blower Complete	239-45986-00	239-45986-00
2 Air Mixing Inlet	239-45868-00	239-45868-00
3 Pressure Switch	415-45867-02	415-45867-02
High Altitude Pressure Switch	239-45867-04	239-45867-04
4 Blower Temperature Switch	415-45865-00	415-45865-00
5 Blower Gasket	239-45866-00	239-45866-00
6 Blower Power Cord	239-45990-00	239-45990-00
7 3" Exhaust Adaptor	239-45639-00	239-45639-00
8 Condensate Hose Kit	415-45875-00	415-45875-00
9 Flue Reducer	243-42572-00	243-42572-00
10 Heat Trap Outlet	415-45167-00	415-45167-00
11 Hot Water Outlet Anode ▲	415-55482-00	415-55482-00
Hot Water Outlet Anode (Aluminum) ▲	415-55484-00	415-55484-00
Hot Water Outlet Anode (A420 Aluminum) ▲ #	415-55486-00	415-55486-00
12 Flue Baffle	239-45373-00	239-45373-00
13 Heat Trap Inlet	415-45073-00	415-45073-00
14 Cold Water Inlet Dip Tube ▲ ▲	415-45398-01	415-45398-02
Cold Water Inlet (Hydrojet) Assembly (PSDTA) (NC CODE) ▲ ▲	415-45092-01	---
15 Safety Circuit Wire Harness	239-45617-02	239-45617-02
16 T&P Valve	415-40594-02	415-40594-02
17 3/4 NPT Plug	239-11638-00	239-11638-00
Natural Gas (BN) Burner Assembly		
18 Natural Gas Burner Assembly Complete**	243-45652-02-26	243-45652-04-25
19 Burner Head*	228-42506-00	228-42506-00
20 Main Burner Orifice*	234-41034-26	234-41034-25
21 Natural Gas Pilot Assembly with Electrode*	415-45653-05	415-45653-05
22 Pilot Orifice*	234-45869-01	234-45869-01
High Altitude Orifice 2000ft. to 5000ft.*	234-41034-29	234-41034-29
High Altitude Orifice 5000ft. To 8000ft.*	234-41034-30	234-41034-30
High Altitude Orifice Over 8000ft.	234-41034-31	234-41034-31
23 Natural Gas Feed Line	233-45615-02	233-45615-04

*Inner door gasket kit recommended

**Ordering a complete burner assembly may increase delivery time. Please order the specific component required for the quickest delivery.

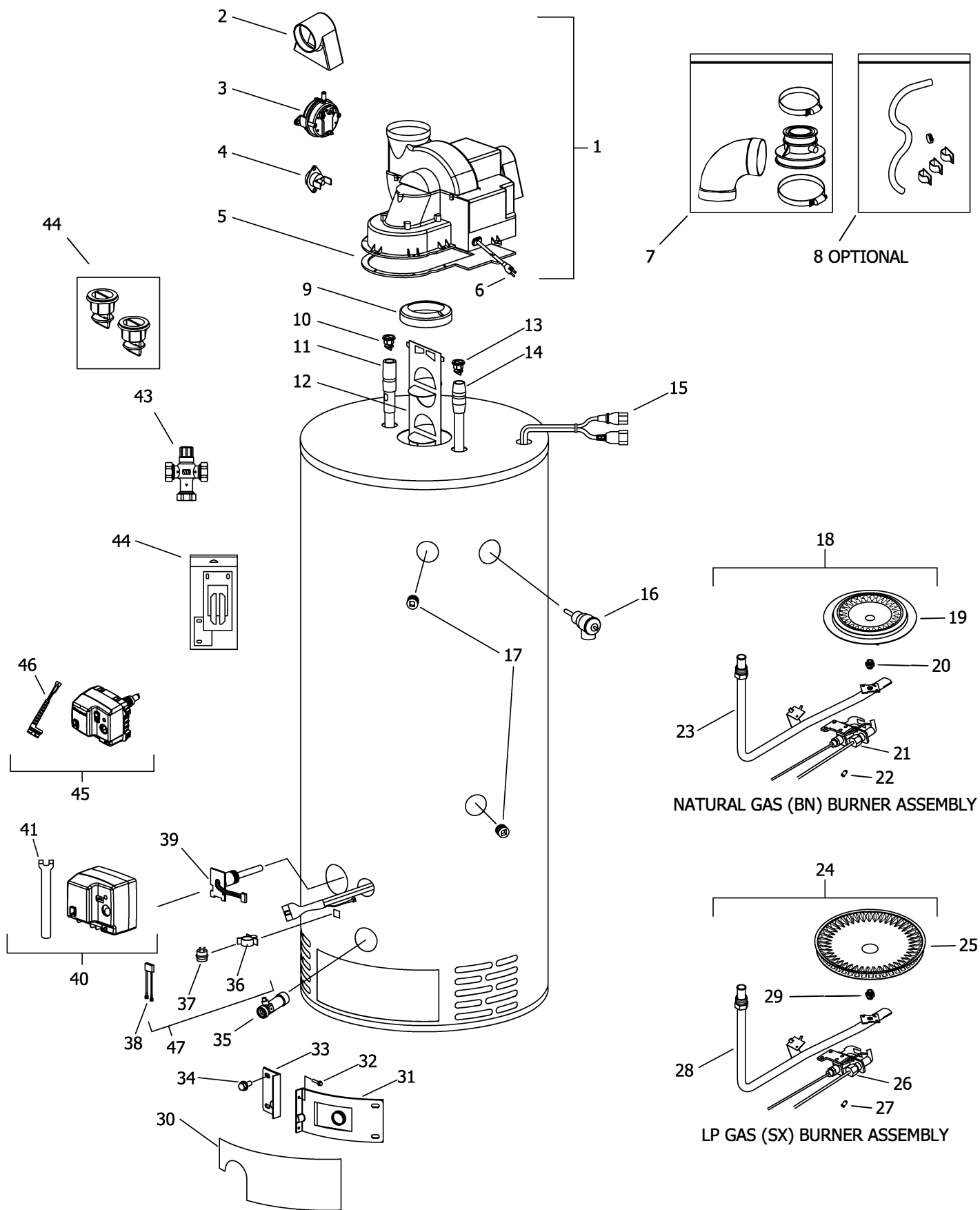
▲ Order with item 10.

▲ ▲ Order with item 13.

A420 Anode may need to be cut to length

◆ For serial numbers beginning with "JM" or sooner

◆ ◆ For serial numbers beginning with "KA" or later



Item Description	Model	Model
	TW450S65F*(BN, CX, SX)	TW465S65F*(BN, CX, SX)
L.P. Gas (SX) Titanium Stabilized Stainless Steel Burner Assembly		
24 L.P. Gas (SX) Burner Assembly Complete**	243-47119-02-43	243-47119-03-42
25 LP Gas (SX) Burner Head*	228-47000-00	228-47000-00
26 L.P. Gas Pilot Assembly with Electrode*	415-45653-04	415-45653-04
27 L.P. Pilot Orifice*	234-45869-02	234-45869-02
28 L.P. Gas Feed Line*	233-47109-02	233-45616-04
29 L.P. Gas Main Burner Orifice*	234-47064-43	234-47064-42
High Altitude Orifice 2000ft. to 5000ft.*	234-47064-44	234-47064-44
High Altitude Orifice 5000ft. To 8000ft.*	234-47064-47	234-47064-47
High Altitude Orifice Over 8000ft.*	234-47064-48	234-47064-48
30 Outer Door	243-43962-00	243-43962-00
31 Right Side Inner Door	239-45642-18	239-45642-20
32 Screw #8-13 x 3/4	239-44195-00	239-44195-00
33 Left Side Inner Door	239-43968-18	239-43968-20
34 Screw #10-12 x 3/4	239-44113-00	239-44113-00
35 Brass Drain Valve	415-42351-02	415-42351-02
36 Flammable Vapor Sensor Clip	239-45648-00	239-45648-00
37 Flammable Vapor Sensor	239-45560-00	239-45560-00
38 Sensor Harness♦	239-49791-00	239-49791-00
39 Thermal Well♦	239-45651-02	239-45651-02
40 Kit- NAT Gas Control w/Service Tool♦	---	---
Kit- LP Gas Control w/Service Tool♦	415-45614-02	415-45614-02
41 Gas Control Service Tool♦	239-45991-00	239-45991-00
42 Inner Door Gasket Kit	239-44078-00	239-44078-00
43 ASSE Approved Mixing Valve	239-51778-00	239-51778-00
44 Heat Trap Insert Kit	265-45419-00	265-45419-00
45 Gas Valve Natural Gas♦♦	415-48795-04	415-48795-04
Gas Valve LP Gas♦♦	415-48796-04	415-48796-04
46 Flammable Vapor Sensor Harness♦♦	239-49791-00	239-49791-00
47 Flammable Vapor Sensor Assembly♦	243-46173-00	243-46173-00
Flammable Vapor Sensor Assembly♦♦	243-49792-00	243-49792-00

*Inner door gasket kit recommended

**Ordering a complete burner assembly may increase delivery time. Please order the specific component required for the quickest delivery.

▲ Order with item 10.

▲▲ Order with item 13.

A420 Anode may need to be cut to length

♦ For serial numbers beginning with "JM" or sooner

♦♦ For serial numbers beginning with "KA" or later



United States

Sales 1-800-523-2931
Technical Support 1-800-334-3393
Email techsupport@bradfordwhite.com
Warranty 1-800-531-2111
Email warranty@bradfordwhite.com
Service Parts 1-800-538-2020
Email parts@bradfordwhite.com

Canada

Sales 1-866-690-0961 1-905-203-0600
Fax 905-636-0666
Warranty 1-800-531-2111
Email warranty@bradfordwhite.com
Technical Support 1-800-334-3393
Email techsupport@bradfordwhite.com
Service Parts and Orders ca.orders@bradfordwhite.com

For U.S. and Canada field service, contact your professional installer or local Bradford White sales representative.

International

General Contact international@bradfordwhite.com