

# 75 GALLON ULTRA LOW NO<sub>x</sub> SUPPLEMENT TO INSTRUCTION MANUAL P/N 238-45917-00 (Replaces pg. 28 in instruction manual)

## ▲WARNING

Failure to adhere to these installation and operating instructions may create a hazard to life and property and will nullify the warranty.

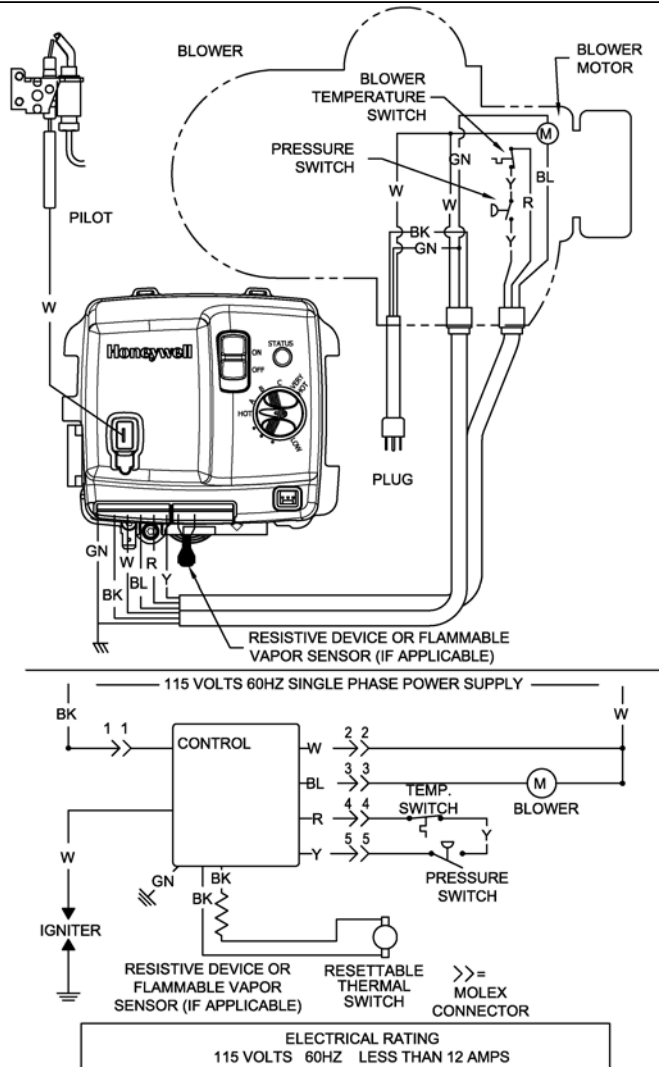
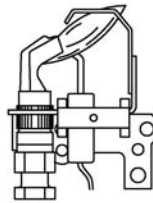
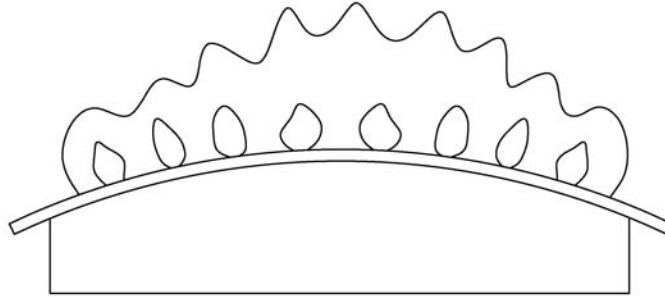


Figure 1

## **BURNER FLAME CHECK (Replaces pg. 32 of instruction manual)**

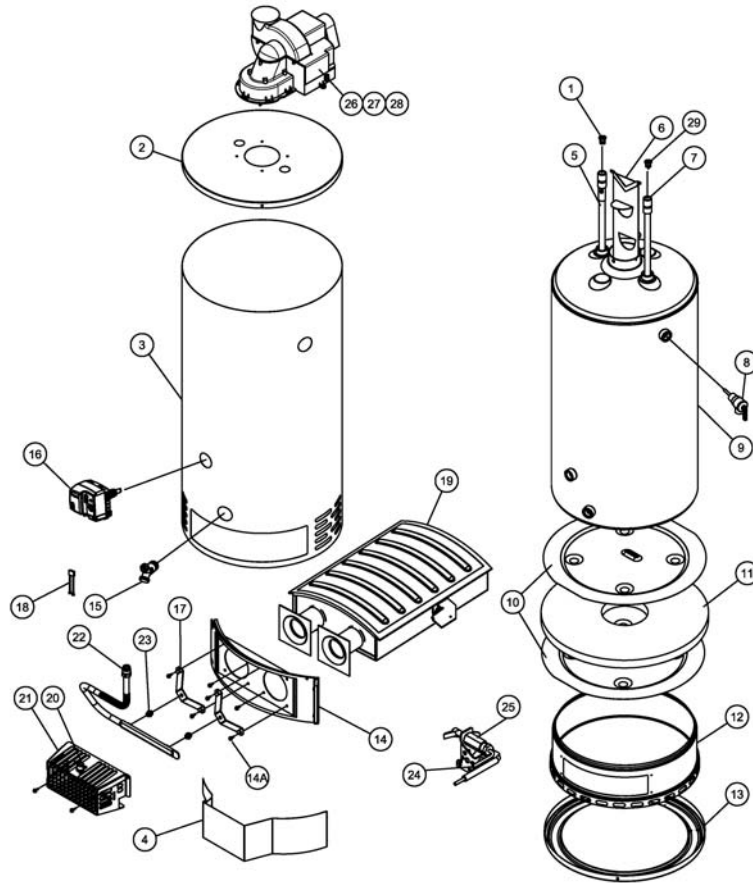
These models are equipped with self-adjusting air mixture and do not have an adjustable air shutter. At periodic intervals, a visual check of the main burner and pilot flames should be made to determine if they are burning properly. The main burner flame should light smoothly from the pilot. The burner flame should be soft and undefined. After five minutes of burner operation the burner face should be glowing orange and emitting an orange flame.



PILOT IN OPERATION

**Figure 2**

**PARTS LIST AND DRAWING**  
(Replaces pg. 38 of instruction manual)



PART NAME AND DESCRIPTION	
1. Heat Trap Insert (Outlet)	15. Drain Valve
2. Jacket Head Pan	16. Gas Control Valve
3. Jacket	17. Manifold Bracket
4. Outer Door	18. Resistive Device
5. Magnesium Anode	19. Burner Assembly
6. Flue Baffle Assembly	20. Re-settable Thermal Switch
7. Dip Tube-Cold Water Inlet	21. Burner Assembly Cover
8. Temperature and Pressure Relief Valve	22. Gas Feedline
9. Glass Lined Tank	23. Orifice
10. Heat Radiation Shield	24. Pilot Gas Feedline
11. Foam Insulation	25. Pilot Assembly
12. Combustion Chamber Assembly	26. Blower Assembly
13. Jacket Base Pan	27. Blower Switch (Not Shown)
14. Inner Door Assembly	28. Blower Temp. Switch (Not Shown)
14A. #8 x 3/4 screw	29. Heat Trap Insert (Inlet)

**THE FOLLOWING INSTRUCTIONS ARE FOR INSTALLATION OF:  
GAS WATER HEATERS SUITABLE FOR WATER (POTABLE)  
HEATING AND SPACE HEATING  
(Replaces pg. 39 of instruction manual)**

1. All piping components connected to this water heater for space heating applications must be suitable for use with potable water. In Massachusetts, space heating piping length **must not** exceed 50 feet.
2. Toxic chemicals, such as those used for boiler treatment, **must not** be introduced into potable water used for space heating.
3. This water heater **must not** be connected to an existing heating system or component(s) previously used with a non-potable water heating appliance.
4. When the system requires water for space heating at temperatures higher than required for other uses, a means such as an ASSE approved mixing valve shall be installed to temper the water for those uses in order to reduce scald hazard potential.

Please refer to the illustrations below for the suggested piping arrangement.

