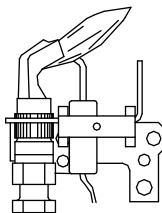
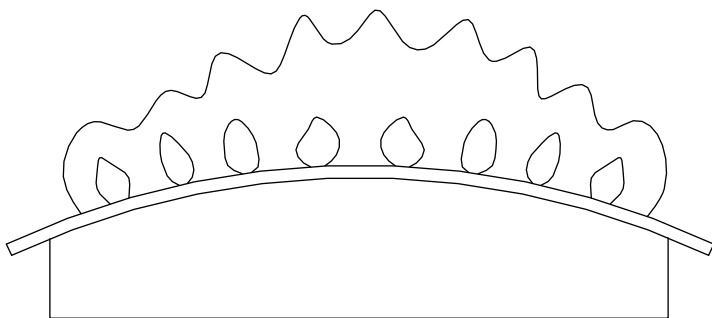


SUPPLEMENT TO INSTRUCTION MANUAL
P/N 238-47936-00
Burner Flame Check
(Replaces pg. 46 in instruction manual.)

Steel Burner: These models are equipped with self-adjusting air mixture and do not have an adjustable air shutter (See *Figure 18*). At periodic intervals a visual check of the main burner and pilot flames should be made to determine if they are burning properly. The main burner flame should light smoothly from the pilot.

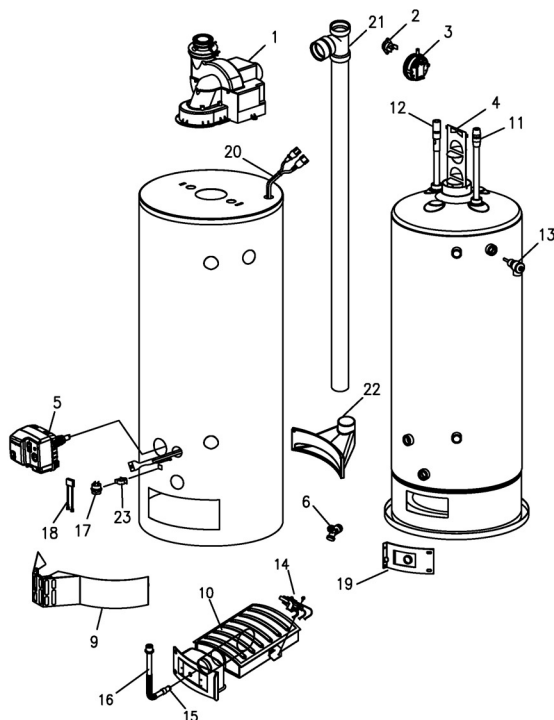


PILOT IN OPERATION

Figure 18

(Replaces pg. 54 in instruction manual.)
PARTS LIST DRAWING

Note: Provide the part name, model and serial numbers of the water heater when ordering parts.



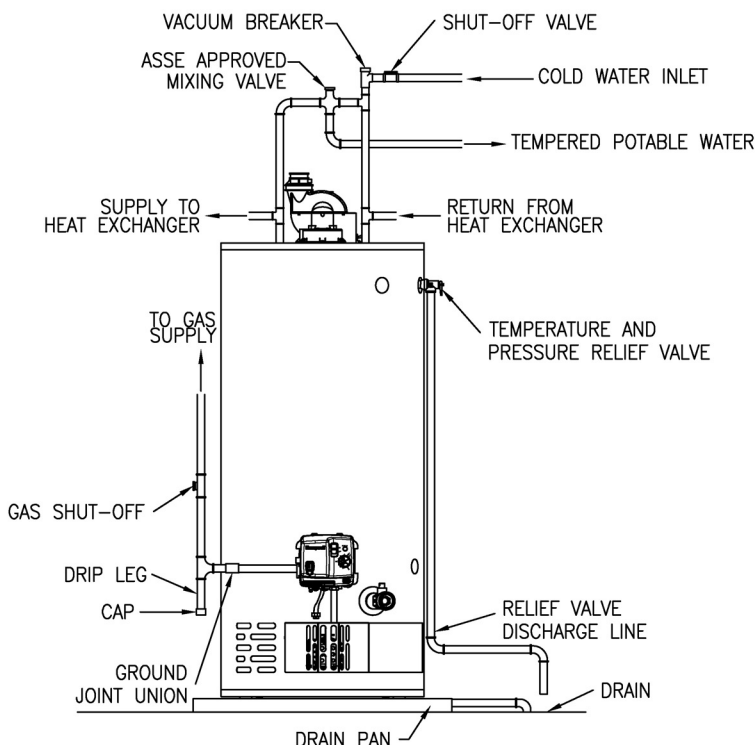
PARTS LIST

PART NAME AND DESCRIPTION	
1. Blower Assembly	13. T&P Relief Valve
2. Temp. Switch	14. Pilot Assembly
3. Pressure Switch N.O.	15. Main Burner Orifice
4. Flue Baffle	16. Gas Feedline
5. Honeywell Gas Control Valve	17. Flammable Vapors Sensor
6. Drain Valve	18. Sensor Harness
7. Fiberglass Insulation (not shown)	19. Inner Door Assembly
8. Foam Insulation (not shown)	20. Blower Harness
9. Outer Door	21. Tee and Vent Pipe Assembly
10. Steel Burner	22. Air Intake Boot
11. Diptube-Nipple	23. Vapor Switch Mounting Bracket
12. Anode-Nipple	

(Replaces pg. 55 in instruction manual.)
PARTS LIST DRAWING

1. All piping components connected to this water heater for space heating applications must be suitable for use with potable water. In Massachusetts, space heating piping length **must not** exceed 50 feet.
2. Toxic chemicals, such as those used for boiler treatment, **must not** be introduced into potable water used for space heating.
3. This water heater **must not** be connected to an existing heating system or component(s) previously used with non-potable water heating appliance.
4. When the system requires water for space heating at temperatures higher than required for other means, such as an ASSE approved mixing valve must be installed to temper the water for those uses in order to reduce the scald hazard potential.

Please refer to the illustration below for suggested piping arrangement.



NOTES