

# Water Heater Leg Kit Installation Instructions

1. **Move the water heater to the location it will be installed.**
  - Leave adequate room to place the water heater on its side without interference from walls or other obstacles.
2. **Do not remove the packaging carton from the water heater before the leg kit has been installed. Failure to leave the water heater in its packaging could result in personal injury or damage to the water heater.**
  - Make sure there is adequate room to lay the water heater on the front side of the packaging as pictured in figure 1.

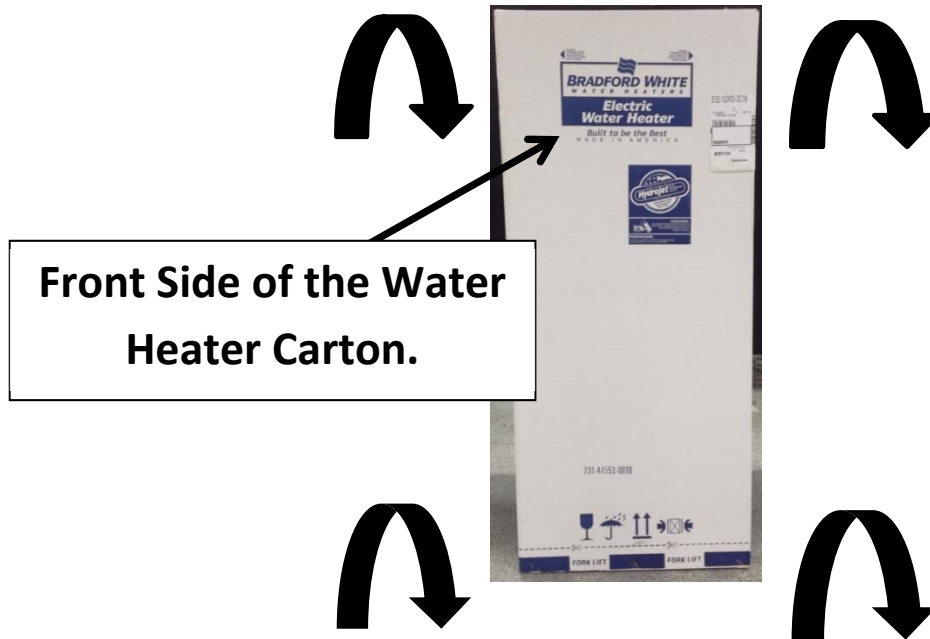


Figure 1: Water heater packaging carton front side.

3. **Place the water heater on its front side with two people.**
  - Make sure that at least two people place the water heater on its side as shown in figure 2. **Do not** attempt to place the water heater on its side with one person. Attempting to place the water heater on its side with one person could result in personal injury or damage to the water heater.



Figure 2: Place the water heater on its side as shown with two people.

4. Cut the carton along the dotted line on 3 sides and cut a slit on the two corners as shown in figure 3.



Figure 3: Cut the carton along the dotted line, cut 2 slits in the bottom, and cut the remaining portion.

5. Secure the legs with the self-tapping screws that were provided with the kit as shown in figure 4.

- Use a 1/4 inch socket and driver for the self-tapping screws.
- Secure the legs to the water heater using 6 screws in the locations shown in figure 5.



Figure 4: Self tapping screws used to attach the legs to the water heater.

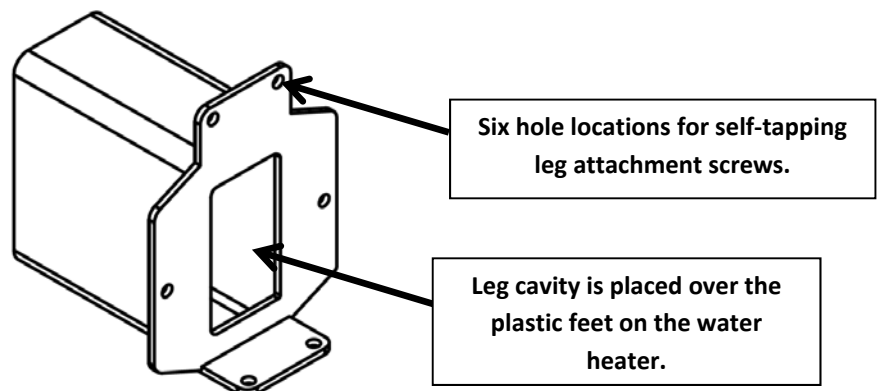


Figure 5: Attachment holes for 6 self-tapping screws and plastic feet cavity location.

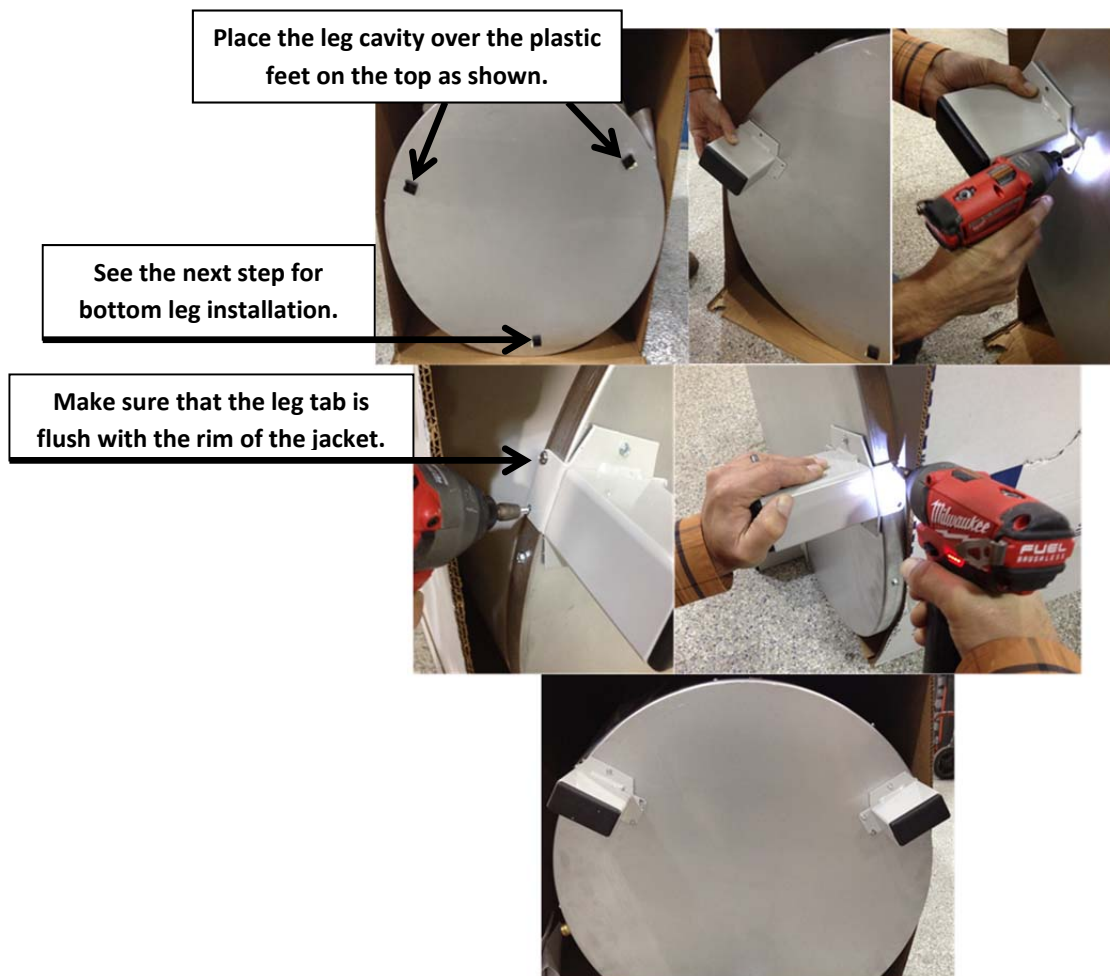


Figure 6: Installation of two legs on the water heater.

6. Roll the water heater and its packaging carton on its side to access the third leg location as shown in figure 7.

- **Do not** attempt to roll the water heater on its side with one person. Failure to roll the water heater on its side with two people may result in personal injury or damage to the water heater.



Figure 7: Accessing and installing the third leg.



7. Roll the water heater back into position so that two legs are oriented toward the floor as shown in figure 8.

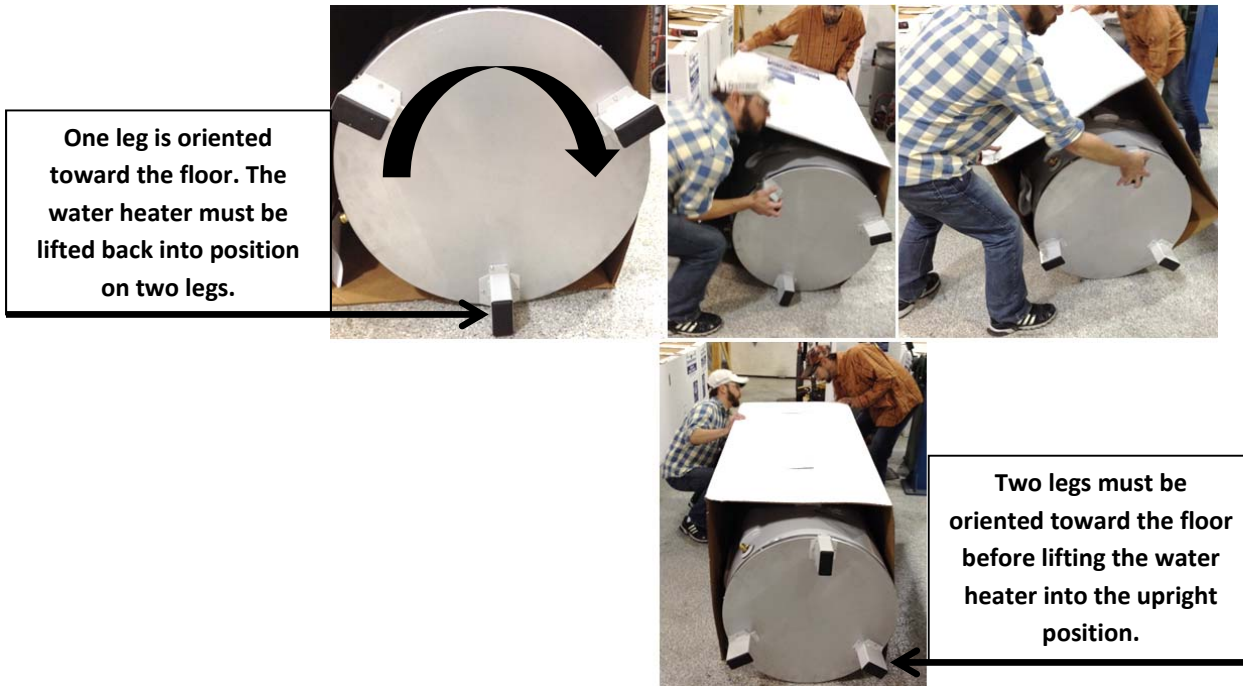


Figure 8: Roll the water heater so that two legs are oriented towards the floor.

8. Lift the water heater back into its upright position with two people as shown in figure 9.

- **Do Not** attempt to lift the water heater into the upright position with one person. Failure to lift the water heater into the upright position with 2 people may result in personal injury or damage to the water heater.
- **Do Not** attempt to lift the water heater into the upright position with one leg oriented toward the floor. Failure to lift the water heater back into position with two legs oriented toward the floor may result in personal injury or damage to the water heater.



Figure 9: Lift the water heater into the upright position with two or more people.

9. Refer to the Installation and Operation Manual provided with this water heater to proceed with the installation.